



UEP06
Electricity Supply Industry – Generation Sector
Training Package

Volume 1 – Part 1
Qualifications Framework

Volume 1 of 2

Electricity Supply Industry – Generation Sector Training Package UEP06

Version Number 1. Review Date 31 Dec 2009

© Commonwealth of Australia 2006

The views expressed in the copyright work do not necessarily represent the views of the Commonwealth of Australia.

This work is copyright and licensed under the AShareNet Free for Education instant licence (AShareNet-FfE Licence). The onus rests with you to ensure compliance with the AShareNet-FfE licence and the following is merely a summary of the scope of the Licence.

When you obtain a copy of material that bears the AShareNet-FfE licence mark by legitimate means you obtain an automatic licence to use and copy the work in whole or in part, solely for educational purposes.

Individual learners may:

1. use the material personally for their education such as including it, with proper attribution, in work that is performed in the course of that education
2. make unlimited copies, in whole or in part, of the material.

Organisations may:

1. use the material within the organisation or for the services provided by the organisation
2. make or give copies to learners
3. charge for the education provided
4. charge learners for the material on a cost-recovery basis.

Conditions for the licence can be found at <http://www.aesharenet.com.au/FfE2/>. Queries regarding the standard AShareNet-FfE Licence conditions should be directed to the AShareNet website at <http://www.aesharenet.com.au/help/support/>.

In addition to the standard AShareNet-FfE Licence conditions, the following special conditions apply:

1. The copyright work must only be used in Australia and New Zealand.
2. You are not permitted to develop either an Edited Version or Enhancements of the Licensed Material.

Use of this work for purposes other than those indicated above, requires the prior written permission from the Commonwealth. Requests should be addressed to:

Training Copyright
Department of Education, Science and Training
GPO Box 9880
Canberra City ACT 2601 Australia
or email copyright@training.com.au

This work is the result of wide consultations with Australian industry participants. It is a collaborative view and does not necessarily represent the view of DEST or any specific body. For the sake of brevity it may omit factors which could be pertinent in particular cases. While care has been taken in the preparation of this Training Package, DEST and the original developer do not warrant that any licensing or registration requirements specified here are either complete or up-to-date for your State or Territory. DEST and the original developer do not accept any liability for any damage or loss (including indirect and consequential loss) incurred by any person as a result of relying on the information contained in this Training Package.

The Commonwealth, through the Department of Education, Science and Training, does not accept any liability to any person for the information or advice (or the use of such information or advice) which is provided in this material or incorporated into it by reference. The information is provided on the basis that all persons accessing this material undertake responsibility for assessing the relevance and accuracy of its content. No liability is accepted for any information or services which may appear in any other format. No responsibility is taken for any information or services which may appear on any linked websites.

Published by: ((Publisher Name))
First published: ((First Published Date))
ISBN: ((ISBN))
Printed by: ((Printer Name))

AShareNet Code: ((AShareNet Code))
Print Version No: ((Printer Version Number))
Release Date: ((Release Date))

Table of Contents

Volume 1 Part 1	4
1.1.1 ESI – Generation Sector Qualifications Framework	4
List of Generation Sector Qualifications	6
Allied Qualifications	7
Possible Skills Clusters	7
Skill Cluster CSUs	8
1.1.2 Key Features and Design Needs	9
1.1.3 Structuring of Qualifications	11
Flexibility	11
Contextualisation	11
Regulatory Arrangements	12
1.1.4 Valuation of Competency Standard Units	13
ESI Competency Standard Units – Valuation processes and procedures	13
AQF/Unit Value Table	14
Importing units and valuing imported units	14
Exporting ESI – CSUs from this Training Package	15
1.1.5 Qualifications – Completion Requirements Framework	15
Endorsements	16
Qualification Completion Values	16
1.1.6 Qualifications and Competency Recognition Issuance Requirements	17
1.1.7 Pathways into Individual Qualifications	18
Articulation pathways	19
Access, Equity and Cultural Diversity	20
Key Competencies	20
Skills Enabling Employment	20
Language, Literacy and Numeracy	21
New Apprenticeship – application	21
Entry Requirements for Certificate IV Maintenance Qualifications	21
Qualification Pathways – Suggested Generation Sector Stream Pathways	22
1.1.8 Maintenance of Qualifications	23
1.1.9 The Australian Qualification Framework	23
What is the Australian Qualification Framework?	23
Qualifications	23
Statement of Attainment	24
AQF Guidelines and Learning Outcomes	24
1.1.10 ESI – Generation Qualifications Structures	31
Certificate II	31
Certificate III	33
Certificate IV	36
Diploma	42
Schedule of Electives to Qualifications Structure	47
Schedule 1: Units UEPOPS201A – UEPOPS250A	48
Schedule 2: Units UEPOPS301A – UEPOPS356A	51
Schedule 3: Units UEPMNT301A – UEPMNT360A	54
Schedule 4: Units UEPOPS401A – UEPOPS442A	57
Schedule 5: Units UEPMNT401A – UEPMNT433A	59
Schedule 6: Units UEPOPS501 – UEPOPS515	61
Schedule 7: Units UEPMNT501 – UEPMNT504	62
Schedule 8: Imported Competency Standard Units from other Training Packages	62

Volume 1 Part 1

1.1.1 ESI – Generation Sector Qualifications Framework

The Qualifications Framework in this Electricity Supply Industry (ESI) – Generation Sector Training Package provides for two outcomes, i) Qualifications and ii) Possible Skill Clusters competency standard units.

The qualifications listed in this Training Package adhere to the advice provided in the *AQF Implementation Handbook 3rd Edition 2002*. They have been developed by the respective sectors of the ESI – Generation Sector in accordance with the principles listed here.

Qualifications:

- are competency based
- are made up by clustering or grouping individual Competency Standard Units
- are relevant, in terms of both level and scope, reflecting the realistic vocational needs of the industry
- facilitate real career pathways
- reflect industry work requirements and not be influenced by the variety of existing qualifications which may have been used in the past for career progression
- are constructed so as to enhance the prospects for consistency, equity of effort, transferability and portability within and across industries.

Note: Qualification structures are not designed nor intended to be misrepresented for other purposes.

The qualifications have been designed and structured by industry in consultation with a range of stakeholders, including regulators, RTOs and the community. They facilitate worthwhile career pathways within the industry. The structure, composition and range of the qualifications and the requirements necessary for obtaining them have been designed to allow employers and employees to select the qualification and units as needed to meet their skill and work organisation requirements. The structure of each qualification has the flexibility to provide the necessary competencies (knowledge, skills and transferable abilities and capacities) related to the industry sector and the needs of the enterprise.

The benefits to industry, individuals and the community from individuals having attained a qualification from a Training Package are that they:

- can apply their knowledge and skills as they become more adaptable, productive and better skilled
- maintain pace with technological advancement
- control highly technical equipment
- can provide improved service delivery supported by new levels of technological competence
- critically assess and appraise situations and apply creative, diagnostic and problem solving techniques on a day-to-day basis
- communicate ideas by speech and in writing
- can perform work safely.

For the industry and the community the benefits are:

- improved productivity and efficiency and enhanced risk mitigation

- employee qualifications (based on competent performance) are portable across State/Territory borders – *can be used more effectively by enterprises for recruitment, skilling/re-skilling and retention*
- incorporation of an external national benchmark skills recognition framework within an Enterprise's culture and assures those deemed competent have met a minimum Industry standard of performance (*Use for benchmarking and compliance purposes*)
- communication to employees, regulators, customers, the community and other stakeholders that an enterprise takes its responsibilities as a corporate citizen and compliance seriously
- portability of enterprises is enhanced when competing for interstate and/or national contracts

Access, Equity and Cultural Diversity

The qualifications in this Training Package reflect the range of competencies required of employees in the Generation sector of the Electricity Supply Industry, and are written in a non-exclusive manner so as to increase the participation rates of all equity and disadvantaged groups and to minimise unintentional bias.

Key Competencies

Key Competencies interrelate with qualification outcomes through the medium of each competency standard unit making up the qualification. The Key Competencies are described in detail in Part 2 – Competency Standards of this Training Package and in its own section in the unit and Volume 2, Part 4 Key Competencies.

Skills Enabling Employment

Consideration has been given to the inclusion of formative information related to specific skills enabling employment, that combined enhance entry into the industry and the qualifications on offer. This information has been introduced in each competency standard unit. The Skills Enabling Employment is described in more detail Part 2 – Competency Standards and in its own section in the unit and Volume 2, Part 5 Skills Enabling Employment.

Recently, the NQC resolved that Employability Skills are to be embedded into Training Packages where these skills are deficient. In consideration of this, the NQC has supported the establishment of a quality assurance panel to oversee audits of endorsed Training Packages in collaboration with declared Industry Skills Councils (ISCs).

EE-Oz Training Standards in agreement with DEST has agreed to undertake an activity to audit and map the 'Skills Enabling Employment' model framework developed by EE-Oz Training Standards against the NQC's endorsed employability skills. The audit process is expected to take 12 months from the Training Package endorsement date. From the gap identified, an action plan will be implemented to enable transition from the existing 'Skills Enabling Employment' model framework to the new arrangement.

Language, Literacy and Numeracy

A new and specific section related to language, literacy and numeracy skills has been included in each competency standard unit to provide advice on the entry requirements for each unit. It provides advice on the relevant language, literacy and numeracy entry-level requirements that maximise the possibility of successful completion of the competency standard units and, subsequently the qualification.

The language, literacy and numeracy definitions and requirements are described in more detail in Volume 2, Part 3 Language, Literacy and Numeracy Skills. Each competency standard units in Volume Part 2 Competency Standards references the respective language, literacy and numeracy skills that apply.

New Apprenticeship – application

New Apprenticeships are work related competency programs designed for entry-level contracted employment for new entrants to the industry. For further information regarding new apprenticeships and their application in relation to this Training Package refer to Appendix A – New Apprenticeship – application. Appendix A is located at the end of Volume 1 Part 3 – Assessment Guidelines.

List of Generation Sector Qualifications

The full range of the Electricity Supply Industry (ESI) – Generation Sector Training Package are summarised below:

AQF	Qualification Title	Code
2	Certificate II in ESI Generation (Operations Support)	UEP20106
3	Certificate III in ESI Generation (Systems Operations)	UEP30106
	Certificate III in ESI Generation (Operations)	UEP30206
4	Certificate IV in ESI Generation (Systems Operations)	UEP40106
	Certificate IV in ESI Generation (Operations)	UEP40206
	Certificate IV in ESI Generation Maintenance (Mechanical)	UEP40306
	Certificate IV in ESI Generation Maintenance (Fabrication)	UEP40406
	Certificate IV in ESI Generation Maintenance (Electrical/Electronic)	UEP40506
5	Diploma of ESI Generation (Systems Operations)	UEP50106
	Diploma of ESI Generation (Operations)	UEP50206
	Diploma of ESI Generation (Maintenance)	UEP50306
	Diploma of ESI Generation (Electrical/Electronic)	UEP50406

Allied Qualifications

Allied Qualifications relevant to the ESI – Generation sector that reside in other nationally endorsed Training Packages are identified below.

AQF	Qualification Title	Training Package	Code
1	Certificate I in Utilities Industry Operations Certificate I in Electrotechnology Certificate I in Sustainable Energy (Electrotechnology)	Gas Electrotechnology	UEG10106 Relevant Training Package
2	Certificate II in Utilities Industries Operations	Gas	UEG20106
3	Certificate III in Electrotechnology (Electrician)	Electrotechnology	Relevant Training Package
4	Certificate IV in System Electrician (Distribution)	Electrotechnology	Relevant Training Package

Possible Skills Clusters

As a result of the High Level Review completed in 2004, it was agreed that a separate section, Possible Skill Clusters competency standard units would be included in Training Packages. The High Level Review findings stated:

‘Statements of Attainment

A set of related competencies below the level of a full qualification can be highly portable and valuable for individuals. The tool for recognising this achievement – the Statement of Attainment – is an important recognition of personal achievement, and is a legitimate credential in its own right, but it has no wider community standing or recognition.

We see a need to enhance the market standing of Statements of Attainment by re-positioning and promoting them as an important tool for nationally recognising related skill sets below full qualification level and which will be valued by individuals and by industry.

We also see a need to

- review the current systems for reporting the enrolment in and achievement of individual competency standard units to achieve greater clarity for the issuers, recipients and end users of Statements of Attainment, and to
- clarify and harmonise advice on Statements of Attainment within AQTF documents and the AQF Implementation Handbook.’

Moving on ... Report of the High Level Review of Training Packages, April 2004 (ANTA)”

Research into the review of the ESI – Generation Sector Training Package identified occasions when stand-alone or specialist Competency Standard Units are needed by the industry for particular circumstances and environments.¹ To address this issue a list of competency standard units that meet regulatory or specialist requirements recognised by Statements of Attainment have been included in this Training Package to support possible skill cluster outcomes. These outcomes generally support requirements associated with regulatory, safety, or specialised/hazardous functions of work. Typically, these CSUs relate to work functions that are associated with regulatory or specialised functions. They may augment or be incidental to existing competencies held by individuals, or be required for workplace entry associated with OHS issues.

Skills Clusters CSUs may not be found in any of the qualification structures in this Training Package. The units do not form a qualification in their own right and often are not able to be regarded as an elective or a replacement competency standard unit within mainstream qualifications.²

Skill Cluster CSUs

The competency standard units listed below may appear within a qualification in this Training Package. However they may be independent from any qualification in which case they can be delivered and assessed independently for a Statement of Attainment.

UNIT CODE	UNIT TITLE
UEPOPS228A	Conduct forklift operations
UEPOPS229A	Operate lifting and load shifting equipment for loads less than ten tonnes
UEPOPS230A	Operate lifting and load shifting equipment for loads greater than ten tonnes
UEPOPS231A	Operate explosive powered tools
UEPOPS302A	Perform advanced rigging work
UEPOPS303A	Perform advanced scaffolding
UEPOPS316A	Operate and monitor a boiler steam/water cycle
UEPOPS339A	Operate and monitor a boiler unit
UEPOPS340A	Operate and monitor a steam turbine
UEPOPS341A	Shut down a steam turbine
UEPOPS349A	Operate H.V. primary switchgear
UEPOPS357A	Operate H.V. secondary switchgear
UEPOPS409A	Start-up a boiler unit
UEPOPS410A	Shut down a boiler unit

¹ Many qualified people in the industry seek further skill sets training in only one or two units at any one time, after attaining their primary qualification – not an additional qualification. The previous Training Package Development policy prohibited the declaration of stand-alone (orphan) Competency Standard Units in their own right. This limited opportunities for individuals and employers to meet their specialised needs.

² For instance, the field of Gas and Electrical Safety on and around equipment is a unique environment and often a full qualification is not required. RTOs in this environment are often specialist in discrete areas and do not wish to offer full qualifications.

1.1.2 Key Features and Design Needs

These refer to the Qualifications Structures and to the Possible Skill Clusters CSUs

Qualification structures have been developed to satisfy flexibility, quality of outcomes, equity and consistency within this Training Package while achieving valid alignment with the Australian Qualifications Framework (AQF). The approach has been to provide a range of purpose-built qualifications at the various AQF levels that align to specific and well recognised workplace outcomes. It also identifies a range of emerging new areas within the Generation Sector. Qualification titles have been chosen after much consultation with a host of stakeholders and practitioners to ensure that they meet the needs of the market now and into the future.

Consideration has been given to the relationship of this Training Package to the full suite of EE-Oz Training Standards Electrotechnology and EnergyUtilities and to other allied Training Packages in ESI – Transmission, Distribution and Rail Sector; Electrotechnology Industry, and Gas Industry, as well as Metals and Engineering, Telecommunications and others.

To achieve this, the design processes have:

- facilitated flexibility by maximising the range of options available within the qualifications structures
- satisfied quality requirements by ensuring the integrity of the AQF in terms of relative equity and flexibility between and across competency levels
- been cognisant of any prevailing Regulatory requirements
- achieved consistency of outcomes across the range of qualifications on offer at respective AQF levels.

To achieve the above outcome requirements, research was undertaken with stakeholders and recommendations agreed on. It was necessary to consider how best to structure and advise on the completion requirements of a qualification. It was decided to use a core and elective approach, and to introduce a system for the valuing elective competency standard units to realise the completion of the qualification. It was proposed that the system would value each of the elective competency standard units. It would assign a total weighting value required for the completion of the respective qualification. The weighting system and process would aim to assure that the AQF characteristics and distinguishing features were met for each qualification outcome. In addition, it would ensure that it related to realistic work organisation and outcomes. The result is a qualification that reflects actual worth, breadth, depth and complexity of outcomes required for performance in and across the EnergyUtilities Industry.

These design features and needs determined the production, packaging, alignment, completion rules and definitions for each qualification.

ESI Generation Sector Qualifications Packaging Requirements

The qualification structures that follow must be read in conjunction with Volume 1 Part 2 – Competency Standards, Unit Construction. The structures of the qualifications that follow include the competency standard units relevant to the outcome of the particular qualification.

Qualifications titles

UEP20106 Certificate II in ESI Generation (Operations Support)
UEP30106 Certificate III in ESI Generation (Systems Operations)
UEP30206 Certificate III in ESI Generation (Operations)
UEP40106 Certificate IV in ESI Generation (Systems Operations)
UEP40206 Certificate IV in ESI Generation (Operations)
UEP40306 Certificate IV in ESI Generation Maintenance (Mechanical)
UEP40406 Certificate IV in ESI Generation Maintenance (Fabrication)
UEP40506 Certificate IV in ESI Generation Maintenance (Electrical/Electronic)
UEP50106 Diploma of ESI Generation (Systems Operations)
UEP50206 Diploma of ESI Generation (Operations)
UEP50306 Diploma of ESI Generation (Maintenance)
UEP50406 Diploma of ESI Generation (Electrical/Electronic)

Each qualification is made up of Core and Stream Core units and a number of Elective units that can be drawn from the Schedules of Electives provided in Volume 2 Part 2.

There are eight (8) Schedules of Elective units that are integral to this Training Package. Users are able to draw electives from the Schedules as detailed in the following qualification packaging rules.

Schedule 1 of 8	(AQF 2 Operations) Units UEPOPS201A – UEPOPS249A
Schedule 2 of 8	(AQF 3 Operations) Units UEPOPS301A – UEPOPS356A
Schedule 3 of 8	(AQF 3 Maintenance) Units UEPMNT301A – UEPMNT360A
Schedule 4 of 8	(AQF 4 Operations) Units UEPOPS401A – UEPOPS442A
Schedule 5 of 8	(AQF 4 Maintenance) Units UEPMNT401A – UEPMNT433A
Schedule 6 of 8	(AQF 5 Operations) Units UEPOPS501A – UEPOPS515A
Schedule 7 of 8	(AQF 5 Maintenance) Units UEPMNT501A – UEPMNT504A
Schedule 8 of 8	Imported Units from other Training Packages

Imported Competency Standard Units

Units of competence imported from other Training Packages are listed by notional AQF level and can be used as electives in qualifications from this package at the same AQF level or lower. Imported units are listed in Schedule 8: Imported Units from other Training Packages.

Those wishing to use imported units will need to contact the respective original Training Package developer or the NTIS to obtain copies of the most recent version of the unit of competence. Imported units must be approved and valued by the National Generation Training Group in order for them to contribute to an ESI qualification.³

³ Contact EE-Oz Training Standards for information about having units of competence valued by the National Generation Training Group.

1.1.3 Structuring of Qualifications

The qualifications for this Training Package have been constructed with flexibility and quality of vocational outcomes, ie competency standard units are clustered and packaged to include a Core and sometimes Stream Core as well as an Elective group of units. For the elective group, a valuation weighting system has been developed and adopted to facilitate choice, whilst assuring equity across the respective range of qualifications on offer. The structures of the qualifications are typically constructed as follows:

Core and Stream Core Core Units are compulsory units required for the industry. They form the core group and together with relevant Stream Core the substantive part of the overall group of competency standard units that make up the structure of the qualification. The core and stream core units do not attract any weighting value for the purpose of the qualification completion requirements. They must be attained along with a number of Elective units.

Core Units can also be Stream Core. Stream Core units contextualise qualifications based on known industry disciplines/sectors.

Stream core units do not attract any weighting value for the purpose of the qualification completion requirements.

Electives Elective Units are those units that provide the flexibility required specifically for enterprise work organisation and outcomes. They are included to meet particular work organisation and skill requirements of enterprises and the completion requirements of the qualification. Elective Units are treated as complementary and as key building blocks to enhancing the contextualisation and relevance of outcomes of the Core Units within the qualification. They are weighted to facilitate flexibility.

Note: Core Units in one qualification may appear as Elective Units in another and thus a weighting value is assigned to them for that qualification(s).

It should be noted that each Qualification stands alone from other related Qualifications. Each is treated independently when determining the group of units required for completion, relative to the chosen Qualification.

Flexibility

The Qualifications Framework aims to provide the maximum flexibility permissible within the regulated context of the Industry and, for all parties using the qualifications.

The qualifications have been structured to meet the needs of the industry. Particular regard has been given to allowing sufficient access for all employers and their employees. The qualifications contain a core and sometimes a stream core requirement supplemented by a broad range of electives, sufficiently broad enough to reflect and respond to diverse approaches to work requirements and organisation. Of the considerable array of elective competency standard units on offer within the qualifications, all are distributed across a selection of discipline areas. It includes a large number of imported units.

Contextualisation

Whilst the opportunity for contextualisation is acknowledged, this is to occur in the context of the following:

- no individual competency standard units shall be varied or contextualised in any way without regard for any prevailing legislative, regulatory codes of practice, guidelines and advisory standard requirements mandated by a relevant State/Territory electricity or regulatory authority
- industry or enterprise developed competency standard units may be added to the elective group of units within the qualification framework, provided the additional unit(s):
 - is relevant and complementary to the core competency standard units; and
 - does not change the intended vocational outcome or equity of the overall qualification,
 - is submitted to the ElectroComms and EnergyUtilities Industry Skills Council, EE-Oz Training Standards for inclusion into this Training Package in accordance with the importation rules and continuous improvement arrangements defined by the National Quality Council (NQC);

Imported competency standard units from other endorsed Training Packages may also be proposed for inclusion into this Training Package to contextualise the qualification, however, they too must be submitted in accordance with, and conform to, the points above.

Regulatory Arrangements

Licensing and regulatory authorities will use a range of Qualifications contained within this Training Package for their respective purposes. In construction of such qualifications EE-Oz Training Standards and respective Regulators have given consideration to the link between the issuance of the qualification and a respective licence. It is expected that the assessment and preferred training regime, which meets the competency outcomes of the qualification, will therefore meet the regulatory requirements. For instance, the Electrical Regulatory Authorities Council (ERAC) promulgated and released a policy in March 2001 as important advice to both Registered Training Organisations (RTOs) as well as apprentice electricians to ensure that persons being trained and assessed under Training Packages, as electricians, have met national licensing requirements.

The ERAC policy required that where a Training Program is recommended by the industry, Registered Training Organisations (RTOs) shall deliver such. The policy stated that, *“Failure by an RTO to provide evidence (to the satisfaction of the relevant licensing authority) that the training (including assessment) delivered to a licence applicant satisfies the stated requirements and forms an integral part of an⁴ approved Training Package qualification, which means the applicant has successfully passed a “electrical safety assessment” in accordance with specified requirements, will result in the applicant being required to undertake further assessments at the discretion of the licensing authority.”*

In recognising the interrelationship that exists between qualification outcomes and licensing/registration, development of qualifications in this Training Package has encompassed respective requirements. Every effort has been made to ensure currency in regulatory requirements is included and thus, RTOs must ensure they are observed. This includes utilising any recommended industry training program designed to meet the Competency Standard Units and qualification outcome related to licensing/registration applications.

It must be remembered that an RTO registered under the Australian Quality Training Framework (AQTF) requirements is given full responsibility for deeming a learner/apprentice competent for the respective Competency standard units making up a Training Package qualification. Where the learner/apprentice is deemed competent by the RTO and is to be issued the qualification and statement for the Competency standard units, the RTO is to also provide all the necessary documentation required by the regulatory authority to support an application of

⁴ Approved Training Package means an ANTA National Quality Council (NQC) endorsed Training Package qualification, that includes the “electrical safety assessment” as approved by ERAC/NUELAC, within the respective industry’s Training Program where recommended (ERAC Policy released 1st July 2001).

eligibility. That is, where regulatory endorsed training strategies/learning specifications and support materials are advised, such as modules/subjects, learning specifications, programs or other, and these are aligned and used to provide the underpinning essential knowledge and associated skills specified in the competency standard units, then, because of licensing and/or industrial requirements, the relevant titles of the aligned subjects/topics or learning specifications within the specified training programs including their results (preferably percentile based) shall be issued. It shall form part of a statement of results attached to the qualification or statement of attainment.

It should be noted that regulatory authorities have advised that the quality of RTOs issuing a qualification for regulatory purposes will be monitored. Where deficiencies are identified, regulators may deem it necessary to introduce appropriate actions, including an additional 'external' assessment following the issuance of the qualification to satisfy the eligibility requirements for issuance of the licence.

1.1.4 Valuation of Competency Standard Units

In this Training Package a balance between flexibility and consistency of outcomes, both between qualifications at the same AQF level and across qualifications of different AQF levels, has been achieved by developing and adopting completion guidelines (valuation weighting system). These guidelines are based on an industry-developed weighting system for Competency Standard Units. It takes into account the electives required to 'trigger' the completion of a qualification. Each Elective Unit is assigned a weighting value that reflects its level of content, breadth, complexity, autonomy, context, and comparative effort of application related to work performance, relative to the Core Units of the qualification level sought within the Electricity Supply Industry, as well as ElectroComms and EnergyUtilities industry.

The elective units selected for completion of the qualification will require, where applicable, relevant prerequisites to also be attained and these too may require weighting relative to the core of the qualification.

ESI Competency Standard Units – Valuation processes and procedures

1. Weighting System – An Overview

To assist with the structuring and completion requirements of the qualifications, all Elective Units contained in the ESI - Generation Sector Training Package have been valued. The method adopted complements the Training Package Developer's Handbook Part 2 Section 1, "*The "size" of a Competency Standard Unit is a reflection of the complexity of skills and knowledge incorporated, or the range of activities undertaken, which may vary*".

The ESI – Generation Sector reviewed this document and statement and subsequently developed a simple and notionally relative valuation weighting system. The system identified three typical types of competency standard units that existed within the industry relative to work organisation and aligned or requisite skill sets. This contrasted slightly from the four types identified in the ANTA handbook. The Industry resolved that only three types of competency standard units applied that were relevant and that each should be assigned a value relative to the type and the AQF level.

The following AQF/Unit Value Table therefore represents the weighting system and allocated points assigned to each unit type and AQF level by the Industry. The system applies to the full suite of elective units contained within this Training Package. The result is the optimal choice/variance of competency standard units elective group packaging.

AQF/Unit Value Table

		Type 1	Type 2	Type 3
AQF	6	180	200	220
	5	140	150	160
	4	110	120	130
	3	80	90	100
	2	30	35	40

2. Unit Type Definitions

The *AQF/Unit Value* Table above specifies the notional weighting points assigned to three levels of competency standard units complexity (ie Type 1, 2 and 3) applying across the six AQF levels.

- Type 1** – Type one competency standard units are considered generally to require less effort/complexity relative to work performance than a type two.
- Type 2** – Type two competency standard units are considered generally to require a moderate level of effort/complexity relative to work performance than a type one.
- Type 3** – Type three competency standard units are considered generally to require more effort/complexity relative to work performance than a type two.

The same principle applies at each AQF level. The weighting points are notional and relative to each other for the specific AQF level as applied within this Training Package. They should not be used or applied for any other use but to assist in meeting the completion requirements of the relevant qualification within this Training Package.

3. Applying the Unit Values

It should be noted that the unit valuation process will never provide an absolute solution for all situations, nor does it attempt to do so. However, in relation to the ESI Generation Sector Training Package, the notional and relative weighting assigned to elective units has been determined by the industry and coordinated by EE-Oz Training Standards.

To ensure optimisation of flexibility and consistency of AQF vocational outcomes across qualifications in the Energy/Utilities Industry and to maintain the integrity of the Core AQF alignment within the Qualification, values for each of the elective unit(s) have been attributed dependent on their breadth and complexity relative to the Core. As previously mentioned; the greater the breadth and complexity, the higher the relative weighting.

Importing units and valuing imported units

1. Importation of Units

To further enhance flexibility the ESI – Generation Sector Training Package has imported a number of other nationally endorsed Training Package competency standard units. Many of these units have been identified for use in the elective range of the qualifications on offer. These too have been valued in accordance with the competency standard units valuation weighting

rules. These weightings are applied for this Training Package only and are utilised for the triggering of the qualifications within it.

It is acknowledged that at the time of developing this Training Package it was not possible to identify the full range of competency standard units that the Industry may have wished to include into the future. To assure continued flexibility, relevancy and currency, a process has been established for users to request the inclusion of competency standard units in the Training Package in accordance with this section of the ESI – Generation Sector Training Package. RTOs and enterprises may identify and wish to submit competency standard units for inclusion in the Training Package, to assist in its continuous improvement. In doing so, competency standard units will need to be submitted, processed and valued in accordance with the Training Package requirements. It is anticipated that this option is not likely to occur frequently given the high degree of imported units already included.

Where enterprises or RTOs wish to have competency standard units included into the elective group of units, or the core of a particular Qualification(s) they can do so in accordance with the *Process for importation and valuation section* (below) of this Part of the ESI – Generation Sector Training Package.

2. Units for importation

When importing competency standard units regulators and users of this Training Package must consider new technology, shared/converging technology, specialist needs or other needs.

Imported units may be:

- those from other industries, which have been nationally endorsed by the National Quality Council (NQC), and/or
- those that may have been developed at an enterprise or local level and they wish to have them submitted for inclusion in range of ESI – Generation Sector Competency Standards.

As previously stated, for the purposes of this Training Package all imported units are to be valued against the same criteria as applied to the ESI – Generation Sector Competency Standards.

3. Process for importation and valuation

The process for inclusion and valuation of imported units is coordinated by the EE-Oz Training Standards, the DEST declared Industry Skill Council for ElectroComms and EnergyUtilities Industry. Importation valuation and inclusion arrangements are facilitated by EE-Oz Training Standards in concert with the relevant Industry advisory committee. Where assistance is required in this regard, contact EE-Oz Training Standards.

Exporting ESI – CSUs from this Training Package

Competency standard units in this Training Package include matters related to language, literacy and numeracy, access, equity, cultural diversity and regulatory arrangements. These sections are interrelated and linked with the Definitions/Glossary section of the Volume. No competency standard unit is to be used in isolation or exported without these interrelated components.

1.1.5 Qualifications – Completion Requirements Framework

Qualifications have been structured to provide an appropriate mix of competency standard units to enhance flexibility whilst assuring consistency and quality of outcomes.

The requirements for individuals to complete each qualification are outlined in the Qualification Structure that follows. Each qualification describes the minimum requirement for the issuance of the qualification. Individuals may undertake additional Elective Units, Specialisations and/or Optional Units concurrent with or after the completion of the qualification.

Typically the trigger for a qualification contained in the Generation Industry Qualifications Structure requires selection and completion of elective units in addition to the Core Units. RTOs are to confirm, in accordance with the approved training plan, that all the critical aspects of evidence are present on completion of the respective competency standard units making up the qualification.

It should be noted that units taken in addition to the minimum requirements of the qualification are not to be included within the qualification completion requirements but are to be appended to it.

Endorsements

In some instances there may be a requirement for a formal statement of ‘endorsement’ to be issued to individuals for a particular range of outcomes within a Competency standard unit. Individuals are required to confirm this for compliance with Regulatory or Industry duty-of-care purposes.

The requisite information that is to be reported on is detailed in the respective competency standard unit, and confirms the context the individual was deemed competent in, relative to the endorsement in the Competency standard unit. This occurs in some Training Package Competency standard units.

In the event that such units are included in this Training Package, further information will be provided. Examples of this are:

UTENES208SA means that the unit Disconnect and reconnect fixed wire electrical equipment connected to supplies up to 1000 Volts a.c. or 1500 Volts d.c, needs to be reported with the endorsement (of motors).

On records and reports it will appear as:

UTENES208SA Disconnect and reconnect fixed wired electrical equipment connected to supplies up to 1000 Volts a.c. or 1500 Volts d.c. (*motors*)

Qualification Completion Values

The following pages detail the range of Qualifications, their respective structure, composition and completion requirements:

AQF	Qualification Title	Core and Stream Core	Elective Points	Selection of Elective Units
2	UEP20106 Certificate II in ESI Generation (Operations Support)	All core and 4 of 5 Stream Core	130	Any combination of elective units from specified Schedules or approved imported units from any other Training Package
3	UEP30106 Certificate III in ESI Generation (Systems Operation)	All core and 6 of 7 Stream Core	450	Any combination of elective units from specified Schedules or approved imported units from any other Training Package
3	UEP30206 Certificate III in ESI Generation (Operations)	All core and 6 of 7 Stream Core	450	

AQF	Qualification Title	Core and Stream Core	Elective Points	Selection of Elective Units
4	UEP40106 Certificate IV in ESI Generation (Systems Operation)	All core and 6 Stream Core	600	Any combination of elective units from specified Schedules or approved imported units from any other Training Package
4	UEP40206 Certificate IV in ESI Generation (Operation)	All core and 5 of 7 Stream Core	600	
4	UEP40306 Certificate IV in ESI Generation (Mechanical)	All core and 5 of 7 Stream Core	600	
4	UEP40406 Certificate IV in ESI Generation (Fabrication)	All core and 5 Stream Core	600	
4	UEP40506 Certificate IV in ESI Generation (Electrical/Electronic)	All core and 5 of 9 Stream Core	600	
5	UEP50106 Diploma of ESI Generation (Systems Operation)	All core and 5 of 9 Stream Core	750	Any combination of elective units from specified Schedules or approved imported units from any other Training Package
5	UEP50206 Diploma of ESI Generation (Operations)	All core and 5 of 9 Stream Core	750	
5	UEP50306 Diploma of ESI Generation (Maintenance)	All core and 5 of 8 Stream Core	750	
5	UEP50406 Diploma of ESI Generation (Electrical/Electronic)	All core and 5 of 9 Stream Core	750	

1.1.6 Qualifications and Competency Recognition Issuance Requirements

Formal recognition of competency achievement may be in the form of:

- A full Qualification in accordance with the criteria established under the ESI — Generation Sector Qualifications Framework and Structure and be in accord with AQTF Standard 10. Where the title of the qualification within the framework and structure requires further clarity to satisfy State/Territory, enterprise and/or regulatory requirements, then an additional occupational identifier to the title in the ESI - Generation Sector Qualifications Framework and Structure shall be provided.

- A Statement of Attainment, and, where appropriate, an authorised entry in an individual's Statement of Competency or Industry Skills Passport or approved instrument, which recognises the attainment of a subset group of individual competency standard units within a full qualification. Where the Statement of Attainment within the qualification structure requires further clarity to satisfy State/Territory, enterprise and regulated requirements, then an additional identifier, Record of Achievement/Statement of results or other such statement is to be provided.

Formal recognition of respective types is to be issued by the RTO. The recognition is to be recorded on formats established by these requirements and/or relevant State Training Authorities and include additional items, which have been agreed by industry and/or regulators in concert with the Industry Skill Council for the ElectroComms and EnergyUtilities Industry or its nominated representatives. Industry and Regulators would expect the formal recognition to include, as a minimum:

- the name of the recipient
- the title of the qualification or Statement of Attainment
- the title and logo of the RTO
- the logos of the relevant State/Territory Training and Recognition Authorities, the Nationally Recognised Training logo and, preferably, the logo of Industry Skill Council
- an attached transcript of information that is meaningful for maximum recognition and skills transfer. Generally this would be the individual competency standard unit titles and any endorsement or subset thereof, as well as detailed formal advice about the achieved results of the interrelated essential knowledge and associated skills. It should be noted that the successful attainment of the specified essential knowledge and associated skills for each competency standard unit forms a critical part of the unit outcome, and reporting is to include its achievement and be in accord with the industry preferred approach. Where regulated requirements advise the use of training support material(s) and they are used to provide the essential knowledge and skills specified in the competency standard unit, then, details of the support material(s) and their achievement should form part of the statement of results attached to the qualification or statement of attainment.
- any endorsements for regulatory outcomes/recognition.

1.1.7 Pathways into Individual Qualifications

Within the ESI – Generation Sector three learning pathways have been identified (and listed in Part 2 Assessment Guidelines); within these learning pathways six qualifications pathways are available for individuals:

- entry-level contracted employment as a New Apprenticeship
- employee whose occupation is Operations, System Operations or Maintenance and needs to upgrade to a new ESI – Generation Sector Qualification (including individuals who are trained outside Australia).
- electricians wishing to multi-skill by seeking to obtain an ESI – Generation Sector Qualification (including individuals who are trained outside Australia).
- maintenance employees of a contracting company who have limited Power Station maintenance skills seeking to obtain an ESI – Generation Sector Qualification (including individuals who are trained outside Australia).

- a pathway utilising an institutional only delivery model that produces quality outcomes to the standard of performance specified in the competency standard units of the Training Package.
- others with related and allied skill sets.

In general these pathways will include outcomes equivalent to a combination of on-and off-the-job training strategies, supported by the industry and regulators, leading to the achievement and demonstration of competence. That is, the pathways identify how competence is developed and how evidence is gathered for the assessment of competence.

While there are historically established norms in apprentice duration of learning and particularly for new entry-level contracted employment entrants, some reduction in this time could be achieved through comprehensive structured arrangements set in a workplace or an institution. This can be achieved by reducing any peripheral activity that naturally occurs in an actual workplace, however the burden is on an institute/skill centre, or assisted by an employer where appropriate, to assure the required outcomes are met. To ensure the replication of the world of work is achieved, it is likely in relation to costs that this would be considerable and possibly prohibitive, and a matter for respective parties. Accordingly, the Industry's preferred arrangement is a combination of off-and on-the-job pathway for new entrants. It is clearly recognised as the more cost effective medium to that of an institutional pathway or all on-the-job approach where developing competency is underpinned by a rich knowledge base. However, it is acknowledged that all pathways are recognised as possible and are only limited by costs. The decision as to where the training and assessment is provided, and work performance evidence gathered, is a matter for the RTO, provided that it is in consultation and in accord with, the Industry and employer/learner.

It does not, however, limit in any way opportunities for entry into respective qualifications for those considered under-represented or from identified disadvantaged groups. These groups include persons from non-English speaking backgrounds, women, indigenous persons or persons with a disability. Appropriate measures should be utilised to accommodate reasonable adjustments for entry into, and completion of the respective qualifications.

The RTO would be expected to carry out such activity in accordance with the criteria established by the relevant State or Territory Training Authority, the AQTF Standards for RTOs to effect a realistic assessment outcome and as outlined in the respective Volumes and related parts of this Training Package including any prevailing regulatory requirements.

The industry also acknowledges that the institutional pathway would clearly be much more expensive than a structured learning/training model that assures a combination of all on-the-job approach to developing competence.

The industry is of the view that it is critical that all evidence with respect to the competency standard units performance requirements and critical aspects of evidence must be present for competence to be attributed. Assessment processes and methodologies must ensure that best practice in assessment and the process of making judgement about attributing competence remains valid and reliable.

Articulation pathways

Qualification articulation and entry and exit arrangements are based on the specific training and education requirements endorsed by the industry. The construction of the competency standard units and the group of units that make up an individual qualification are of particular significance to the operational, regulatory and safety arrangements of the industry. Each qualification provides a unique vocational outcome that can be used for new apprentices as entry-level contracted employees.

All qualifications are open entry and open exit and are available for use as new apprenticeship entry-level contracted employment. New apprenticeship arrangements are subject to State/Territory statutory requirements, prescriptions within industrial instruments and policies of State/Territory training authorities and RTOs.. Reference to what applies should therefore be made from respective statutory bodies in the first instance.

New Apprenticeship arrangements therefore apply to all qualifications; however, they are subject to State/Territory statutory requirements, prescriptions within industrial instruments and policies of State/Territory training authorities.

Open entry is provided into all qualifications, Open entry is available at all levels provided the prospective learner's general education and competency level is equivalent to the outcome of four to five years of secondary school. Additionally, entry levels provide an option for potential learners to choose a qualification suited to their needs while providing flexibility for recruitment action by employers. What must be satisfied for entry is that any listed prerequisite competency standard unit requirements are met. Where the entry requirements are not met industry would expect a requisite entry-bridging program would be developed by an RTO. RTOs would submit these programs in consultation with EE-Oz Training Standards for information and distribution. Entry into all qualifications is also available through Recognised Prior Learning (RPL) arrangements.

Access, Equity and Cultural Diversity

The skills required of employees in the Gas Industry are comprehensive. The qualifications in this Training Package reflect the range of competencies required and are written in a non-exclusive manner so as to increase the participation rates of all equity and disadvantaged groups and to minimise unintentional bias.

Key Competencies

Key Competencies inter-relate with qualification outcomes through the medium of each Competency Standard Unit making up the qualification. The Key Competencies are described in more detail Part 2 – Competency Standards of this Training Package and in its own section in the unit and Volume 2 Part 4 – Key Competencies.

Skills Enabling Employment

Consideration has been given to the inclusion of formative information related to specific skills enabling employment. Combined these enhance entry into the industry and the qualifications on offer. This information has been introduced in each Competency standard unit. The Skills Enabling Employment is described in more detail in Part 2 – Competency Standards of this Training Package and in its own section in the unit and Volume 2 Part 5 – Skills Enabling Employment.

Recently the NQC resolved that employability skills are to be embedded into Training Packages where these skills are deficient. In consideration of this, the NQC has supported the establishment of a quality assurance panel to oversee audits of endorsed Training Packages in collaboration with declared Industry Skills Councils (ISCs).

EE-Oz Training Standards in agreement with DEST has agreed to undertake an activity to audit and map the 'Skills Enabling Employment' model framework developed by EE-Oz Training Standards in its suite of Training Packages against the NQC's endorsed employability skills. The audit process is expected to take 12 months from the Training Package endorsement date. From the gap identified an action plan will be implemented to enable transition from the existing 'Skills Enabling Employment' model framework to the new arrangement.

Language, Literacy and Numeracy

A new and specific section related to language, literacy and numeracy skills has been included in each Competency Standard Unit to provide advice on the entry requirements for each unit. It provides Registered Training Organisations (RTOs), industry and career aspirants with relevant language, literacy and numeracy entry-level advice for each Competency Standard Unit that would maximise an individual's prospects for successful completion of the unit and, where appropriate, the qualification.

The language, literacy and numeracy definitions and requirements are described in more detail in Volume 2, Part 3 – Language, Literacy and Numeracy Skills. Each Competency Standard Unit in Volume Part 2 references the respective language, literacy and numeracy skills that apply.

New Apprenticeship – application

New Apprenticeships are work related competency programs designed for entry-level contracted employment for new entrants to the industry. For further information regarding New Apprenticeships and their application in relation to this Training Package refer to Appendix A – New Apprenticeship – application. Appendix A is located at the end of Volume 1 Part 3 – Assessment Guidelines.

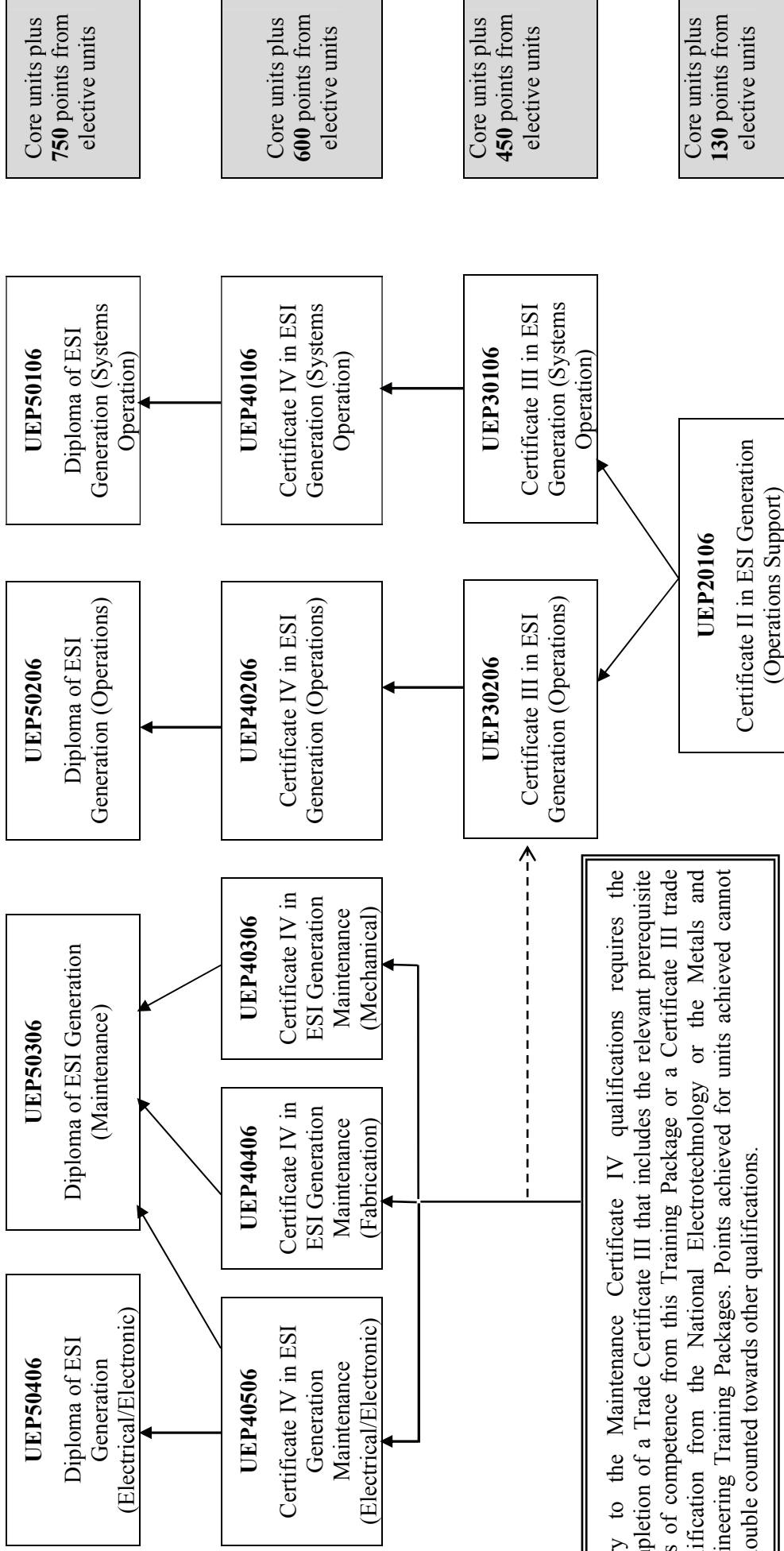
Entry Requirements for Certificate IV Maintenance Qualifications

Entry to the Certificate IV Maintenance qualifications (UEP40306, UEP40406, UEP40506) requires the completion of a Certificate III trade qualification from the Electrotechnology or Metals and Engineering Training Packages or equivalent. Where an individual possesses the respective qualification they cannot for the purpose of gaining a Certificate IV from this Training Package claim RPL for units they already hold by virtue of their trade qualification. The opportunity to double count competency standard units and their points value towards another qualification does not exist.

Specific competency standard units in this Training Package also require a Certificate III trade qualification as a prerequisite for entry. This is particularly so for competency standard units that require the individual to possess an Electrical Licence.

Qualification Pathways – Suggested Generation Sector Stream Pathways

This Training Package provides a range of entry and exit points at each of the AQF levels, shown in the diagram below:



For more information on the latest Training Package vocational standards qualifications and qualification pathways visit or contact ElectroComms and EnergyUtilities Industry Skills Council Ltd trading as EE-Oz Training Standards at www.ee-oz.com.au

1.1.8 Maintenance of Qualifications

The ESI – Generation Sector Qualifications structure was developed by, and is therefore owned by the industry. The Qualifications structure must be maintained so that it reflects the ongoing needs of the Industry sector and responds in a timely manner to changed technologies, work organisation, skills development and related circumstances.

Responsibility for maintaining of the Qualifications structure is shared by the parties who constitute the sector:

- Qualification maintenance will be coordinated and managed by EE-Oz Training Standards in its role as a declared Industry Skills Council for ElectroComms and EnergyUtilities.
- Suggestions and proposals for changes from all parties are welcome. These should be documented and submitted to the Industry Skills Council.

1.1.9 The Australian Qualification Framework

What is the Australian Qualification Framework?

A brief overview of the Australian Qualifications Framework (AQF) follows. For a full explanation of the AQF see the AQF Implementation Handbook, 3rd Edition 2002 and any replacement thereof. You can download this document from the Australian Qualifications Advisory Board (AQFAB) website (www.aqf.edu.au) or obtain a hard copy by contacting AQFAB on phone (03) 9639 1606 or by emailing AQFAB on aqfab@curriculum.edu.au.

The AQF provides a comprehensive, nationally consistent framework for all qualifications in post-compulsory education and training in Australia. In the vocational education and training (VET) sector it assists national consistency for all trainees, learners, employers and providers by enabling national recognition of Qualifications and Statements of Attainment.

Training Packages contain the vocational standards for industry qualifications in the VET sector and must comply with the titles and guidelines of the AQF. Endorsed Training Packages that describe the vocational standards for industry provide a unique title for each AQF qualification which must always be reproduced accurately and are not to be copied in other jurisdictions or varied in any way.

Qualifications

Training Packages can incorporate the following six AQF qualifications:

Certificate I in ...

Certificate II in ...

Certificate III in ...

Certificate IV in ...

Diploma of ...

Advanced Diploma of ...

On completion of the requirements defined in the Training Package, a Registered Training Organisation may issue the respective nationally recognised AQF qualification. Issuance of AQF qualification(s) also must comply with the advice provided in the *AQF Implementation Handbook* and the *Australian Quality Training Framework Standards (AQTF)* for Registered Training Organisations, in particular, Standard 10.

Statement of Attainment

Where an AQF qualification is partially achieved through the achievement of one or more endorsed competency standard units, an RTO may issue a Statement of Attainment. Issuance of Statements of Attainment must comply with the advice provided in the *AQF Implementation Handbook* and the *Australian Quality Training Framework Standards (AQTF)* for Registered Training Organisations, particularly Standard 10.

Under the Standards for Registered Training Organisations, RTOs must recognise the achievement of competencies as recorded on a qualification or Statement of Attainment issued by other RTOs as stated in Standard 5 of the AQTF standards. Given this, recognised competencies can progressively build towards a full AQF qualification.

AQF Guidelines and Learning Outcomes

The *AQF Implementation Handbook* provides a comprehensive guideline for each AQF qualification. A summary of the learning outcome characteristics and their distinguishing features for each VET related AQF qualification is provided below.

Additionally, to provide users with a broad depiction of industry applications for each Qualification level outcome in this Training Package, a description has been included against each AQF Guideline outcome.

The information also includes possible employment outcomes.

Certificate I

Characteristics of Learning Outcomes

Breadth, depth and complexity of knowledge and skills would prepare a person to perform a defined range of activities most of which may be routine and predictable.

Applications may include a variety of employment related skills including preparatory access and participation skills, broad-based induction skills and/or specific workplace skills. They may also include participation in a team or work group.

Distinguishing Features of Learning Outcomes

Do the competencies enable an individual with this qualification to:

- demonstrate knowledge by recall in a narrow range of areas
- demonstrate basic practical skills, such as the use of relevant tools
- perform a sequence of routine tasks given clear direction
- receive and pass on messages/information.

There are no Certificate I Qualifications in this Training Package.

AQF – Certificate II**Characteristics of Learning Outcomes**

Breadth, depth and complexity of knowledge and skills would prepare a person to perform in a range of varied activities or knowledge application where there is a clearly defined range of contexts in which the choice of actions required is usually clear and there is limited complexity in the range of operations to be applied.

Performance of a prescribed range of functions involving known routines and procedures and some accountability for the quality of outcomes.

Applications may include some complex or non-routine activities involving individual responsibility or autonomy and/or collaboration with others as part of a group or team.

Distinguishing Features of Learning Outcomes

Do the competencies enable an individual with this qualification to:

- demonstrate basic operational knowledge in a moderate range of areas
- apply a defined range of skills
- apply known solutions to a limited range of predictable problems
- perform a range of tasks where choice between a limited range of options is required
- assess and record information from varied sources
- take limited responsibility for own outputs in work and learning.

UEP20106 Certificate II in ESI Generation (Operations Support)

Those gaining this qualification will be able to complete work functions such as:

- Local operation of non critical plant systems, lubrication of plant, undertake minor maintenance of both electrical and mechanical equipment, plant cleaning, and the operation of mobile load shifting plant and equipment, observation of safe working practices and environmental procedures.

AQF Certificate III

Characteristics of Learning Outcomes

Breadth, depth and complexity of knowledge and competencies would cover selecting, adapting and transferring skills and knowledge to new environments and providing technical advice and some leadership in resolution of specified problems. This would be applied across a range of roles in a variety of contexts with some complexity in the extent and choice of options available.

Performance of a defined range of skilled operations, usually within a range of broader related activities involving known routines, methods and procedures, where some discretion and judgement is required in the selection of equipment, services or contingency measures and within known time constraints.

Applications may involve some responsibility for others. Participation in teams including group or team coordination may be involved.

Distinguishing Features of Learning Outcomes

Do the competencies enable an individual with this qualification to:

- demonstrate some relevant theoretical knowledge
- apply a range of well-developed skills
- apply known solutions to a variety of predictable problems
- perform processes that require a range of well-developed skills where some discretion and judgement is required
- interpret available information, using discretion and judgement
- take responsibility for own outputs in work and learning
- take limited responsibility for the output of others.

UEP30206 Certificate III in ESI Generation (Operations)

Those gaining this qualification will be able to complete work function such as:

- Local operation of plant systems, isolation of plant systems for work, operation of plant systems, routine observation and maintenance of plant and equipment in operation, observation of civil plant and infrastructure observation of safe working practices and environmental procedures.

UEP30106 Certificate III in ESI Generation (Systems Operation)

Those gaining this qualification will be able to complete work function such as:

- Local operation of plant systems, isolation of plant systems for work, operation of plant systems, operation of network equipment via Data Acquisition Systems, observation of safe working practices and environmental procedures.

Certificate IV

Characteristics of Learning Outcomes

Breadth, depth and complexity of knowledge and competencies would cover a broad range of varied activities or application in a wider variety of contexts most of which are complex and non-routine.

Leadership and guidance are involved when organising activities of self and others as well as contributing to technical solutions of a non-routine or contingency nature.

Performance of a broad range of skilled applications including the requirement to evaluate and analyse current practices, develop new criteria and procedures for performing current practices and provision of some leadership and guidance to others in the application and planning of the skills.

Applications involve responsibility for, and limited organisation of, others.

Distinguishing Features of Learning Outcomes

Do the competencies enable an individual with this qualification to:

- demonstrate understanding of a broad knowledge base incorporating some theoretical concepts
- apply solutions to a defined range of unpredictable problems
- identify and apply skill and knowledge areas to a wide variety of contexts, with depth in some areas
- identify, analyse and evaluate information from a variety of sources
- take responsibility for own outputs in relation to specified quality standards
- take limited responsibility for the quantity and quality of the output of others.

UEP40506 Certificate IV in ESI Generation Maintenance (Electrical/Electronic)

Those gaining this qualification will be able to complete work function such as:

- Installation, repair and maintenance of electrical, electronic, instrumentation systems, maintenance planning and scheduling.
- Observation of safe working practices and environmental procedures. Supervision of others and coordination of work activities of individuals and/or teams.

UEP40406 Certificate IV in ESI Generation Maintenance (Fabrication)

Those gaining this qualification will be able to complete work function such as:

- Installation, fabrication repair and maintenance of industrial pressure vessels and associated pipe work, coded welding, coded welding, welding supervision, general fabrication.
- Observation of safe working practices and environmental procedures. Supervision of others and coordination of work activities of individuals and/or teams

UEP40306 Certificate IV in ESI Generation Maintenance (Mechanical)

Those gaining this qualification will be able to complete work function such as:

- Installation, repair and maintenance of plant and mechanical systems, maintenance planning and scheduling.
- Observation of safe working practices and environmental procedures. Supervision of others and coordination of work activities of individuals and/or teams

UEP40206 Certificate IV in ESI Generation (Operations)

Those gaining this qualification will be able to complete work function such as:

- Operation of plant systems, isolation of plant systems, start-up and shut down of boilers, turbines, reciprocating engines, start-up and shut down of gas turbines, start-up and shut down of hydro plant, Observation of safe working practices and environmental procedures. Supervision of others and coordination of work activities of individuals and/or teams

UEP40106 Certificate IV in ESI Generation (Systems Operation)

Those gaining this qualification will be able to complete work function such as:

- Remote operation of network equipment and isolation of plant and equipment for work, coordination of work activities, cost estimations, Observation of safe working practices and environmental procedures. Supervision of others and coordination of work activities of individuals and/or teams

Diploma

Characteristics of Learning Outcomes

Breadth, depth and complexity covering planning and initiation of alternative approaches to skills or knowledge applications across a broad range of technical and/or management requirements, evaluation and co-ordination.

The self directed application of knowledge and skills, with substantial depth in some areas where judgement is required in planning and selecting appropriate equipment, services and techniques for self and others.

Applications involve participation in development of strategic initiatives as well as personal responsibility and autonomy in performing complex technical operations or organising others. It may include participation in teams including teams concerned with planning and evaluation functions. Group or team coordination may be involved.

The degree of emphasis on breadth as against depth of knowledge and skills may vary between qualifications granted at this level.

Distinguishing Features of Learning Outcomes

Do the competencies or learning outcomes enable an individual with this qualification to:

- demonstrate understanding of a broad knowledge base incorporating theoretical concepts, with substantial depth in some areas
- analyse and plan approaches to technical problems or management requirements
- transfer and apply theoretical concepts and/or technical or creative skills to a range of situations
- evaluate information, using it to forecast for planning or research purposes
- take responsibility for own outputs in relation to broad quantity and quality parameters
- take some responsibility for the achievement of group outcomes.

UEP50406 Diploma of ESI Generation (Electrical/Electronic)

Those gaining this qualification will be able to complete work function such as:

- Installation, repair and maintenance of electrical, electronic, instrumentation systems
Development of maintenance schedules and project management. Implementation of safe working practices and environmental procedures. Management and supervision of others and coordination of work activities of individuals and/or teams

UEP50306 Diploma of ESI Generation (Maintenance)

Those gaining this qualification will be able to complete work function such as:

- Development of maintenance Schedules and project management. Development of operational procedures and systems, Implementation of safe working practices and environmental procedures. Management and supervision of others and coordination of work activities of individuals and/or teams

UEP50206 Diploma of ESI Generation (Operations)

Those gaining this qualification will be able to complete work function such as:

- Development of operational procedures and systems, Manage the start up and shut down of boilers and turbines, hydro plant, gas turbines. Implementation of safe working practices and environmental procedures. Management and supervision of others and coordination of work activities of individuals and/or teams

UEP50106 Diploma of ESI Generation (Systems Operation)

Those gaining this qualification will be able to complete work function such as:

- Remote operation of network systems. Isolation of plant systems for work. Development of operational procedures and systems, Manage the start up and shut down of boilers and turbines, hydro plant, gas turbines. Implementation of safe working practices and environmental procedures. Management and supervision of others and coordination of work activities of individuals and/or teams

Advanced Diploma

Characteristics of Learning Outcomes

Breadth, depth and complexity involving analysis, design, planning, execution and evaluation across a range of technical and/or management functions including development of new criteria or applications or knowledge or procedures.

The application of a significant range of fundamental principles and complex techniques across a wide and often unpredictable variety of contexts in relation to either varied or highly specific functions. Contribution to the development of a broad plan, budget or strategy is involved and accountability and responsibility for self and others in achieving the outcomes is involved.

Applications involve significant judgement in planning, design, technical or leadership/guidance functions related to products, services, operations or procedures.

The degree of emphasis on breadth as against depth of knowledge and skills may vary between qualifications granted at this level.

Distinguishing Features of Learning Outcomes

Do the competencies or learning outcomes enable an individual with this qualification to:

- demonstrate understanding of specialised knowledge with depth in some areas
- analyse, diagnose, design and execute judgements across a broad range of technical or management functions
- generate ideas through the analysis of information and concepts at an abstract level
- demonstrate a command of wide-ranging, highly specialised technical, creative or conceptual skills
- demonstrate accountability for personal outputs within broad parameters
- demonstrate accountability for personal and group outcomes within broad parameters.

There are no Advanced Diploma Qualifications in this Training Package.

1.1.10 ESI – Generation Qualifications Structures

The Electricity Supply Industry (ESI) – Generation Sector qualification structures are detailed in the following pages. The qualification structures must be read in conjunction with Volume 1 Part 2 Competency Standards, Unit Construction. The qualifications listed include the competency standard units relevant to the outcome of the particular qualification.

Prerequisite CSUs

Prerequisite competency standard units are not included in the qualifications listed here. These should be identified directly from individual competency standard units.⁵

In relation to the delivery of prerequisite units, training and formative staged assessments may be delivered (for all or part of the sequence of competency standard units) concurrently and at a different stage to the final assessment of each unit. However, the final assessment of competency for a unit is adherence to the prerequisite sequence. The decision is based on evidence of competence acquired in the prerequisite unit(s).

Certificate II

UEP20106	Certificate II in ESI Generation (Operations Support)
<p>Completion requirements</p> <p>The requirements for granting this qualification is the successful completion:</p> <ol style="list-style-type: none"> 1. All the Core Units (no weighting points attached to Core Units), and 2. Four (4) of the five (5) nominated Stream Core Units (no weighting points attached to Stream Core Units). Unit/s not selected as Stream Core may be used as Electives, and 3. Any combination of Elective Units from Schedule 1 detailed in the Schedule of Electives within this Qualification Structure, the sum of the weighting value is no less than 130 points, or, 4. Imported Units from any other Training Package at a similar AQF level qualification. Imported Units must be approved and valued by the National Generation Training Group for them to contribute to the required 130 points, and 5. All Prerequisite requirements must be achieved (no weighting points). <p>Note:</p> <ul style="list-style-type: none"> • Schedules 1 forms an integral part of this qualification • Only units nominated as Core and Stream Core units can be recognised when they appear as Core or Stream Core in another qualification. • No provision exists for the double counting of Core and Stream Core Units as Elective Unit points towards a second qualification. • Once an Elective Unit of Competence has been achieved and the points gained have counted towards a qualification the points cannot be used again to contribute towards any other qualification. 	
<p>Core Units – All required</p>	
UEPOPS201A	Comply with Occupational Health and Safety Policy and Procedures
UEPOPS202A	Apply Quality Systems to Work
UEPOPS203A	Operate and Monitor Communications Systems
UEPOPS204A	Maintain and Utilise Records

⁵ Supporting advice is provided in Volume 1 Part 1 Qualification Framework – Schedule of Electives to Qualifications Structure; Part 2 Competency Standards Index – Table of Index of Units and Prerequisite requirements and Relationship of units to the former Training Package. Any prerequisite unit not listed in a qualification framework attracts no weighting value, but must be acquired.

UEP20106	Certificate II in ESI Generation (Operations Support)
UEPOPS356A	Apply Environmental and Sustainable Energy Procedures
Stream Core Units – Must have any 4 of 5 units	
UEPOPS205A	Conduct Minor Mechanical Maintenance
UEPOPS206A	Conduct Minor Electrical Maintenance
UEPOPS207A	Perform Plant Lubrication
UEPOPS208A	Operate Local Systems
UEPOPS209A	Perform Process Plant Inspection
Elective Units – 130 points from any combination of units from Schedule 1	

End of qualification

Certificate III

UEP30106	Certificate III in ESI Generation (Systems Operations)
<p>Completion requirements</p> <p>The requirements for granting this qualification is the successful completion:</p> <ol style="list-style-type: none"> 1. All the Core Units (no weighting attached to Core Units) and the required stream core units for the qualification – Certificate II in ESI Generation (Operations Support), and 2. Six (6) of seven (7) nominated Stream Core Units (no weighting points attached to Stream Core Units). Unit/s not selected as Stream Core could be used as Electives, and 3. Any combination of Elective Units from Schedules 1 and 2 detailed in the Schedule of Electives within this Qualification Structure where the sum of the weighting value is no less than 450 points (with a minimum of 225 weighting points drawn from Schedule 2), or, 4. Imported Units from any other Training Package at a similar AQF level qualification. Imported Units must be approved and valued by the National Generation Training Group for them to contribute to the required 450 points, and 5. All Prerequisite requirements (no weighting points). <p>Note:</p> <ul style="list-style-type: none"> • Schedules 1 and 2 forms an integral part of this qualification • Only units nominated as Core and Stream Core units can be recognised when they appear as Core or Stream Core in another qualification. • No provision exists for the double counting of Core and Steam Core Units as Elective Unit points towards a second qualification. • Once an Elective Unit of Competence has been achieved and the points gained have counted towards a qualification the points cannot be used again to contribute towards any other qualification. 	
Core Units – All required	
UEPOPS201A	Comply with Occupational Health and Safety Policy and Procedures
UEPOPS202A	Apply Quality Systems to Work
UEPOPS203A	Operate and Monitor Communications Systems
UEPOPS204A	Maintain and Utilise Records
UEPOPS356A	Apply Environmental and Sustainable Energy Procedures
And the required stream core units for the qualification – Certificate II in ESI Generation (Operations Support)	
Stream Core – Must have 6 of 7 units	
BSBCM302A	Plan and Organise Own Work
UEPOPS208A	Operate Local Systems
UEPOPS301A	Conduct Single Energy Source Isolation Procedures for Permit to Work
UEPOPS317A	Operate and Monitor Fixed Fire Protection Systems
UEPOPS439A	Plan and Organise Work

UEP30106	Certificate III in ESI Generation (Systems Operations)
UEPOPS344A	Interpret and Analyse Single Operation Protection Devices
UEPOPS347A	Operate and Monitor Supervisory, Control and Data Acquisition Systems
Elective Units – 450 points from any combination of units from Schedules 1 & 2 (with a minimum of 225 weighting points drawn from Schedule 2)	

End of qualification

UEP30206	Certificate III in ESI Generation (Operations)
<p>Completion requirements</p> <p>The requirements for granting this qualification is the successful completion:</p> <ol style="list-style-type: none"> 1. All the Core Units (no weighting attached to Core Units) and the required stream core units for the qualification – Certificate II in ESI Generation (Operations Support), and 2. Six (6) of seven (7) nominated Stream Core Units (no weighting points attached to Stream Core Units). Unit/s not selected as Stream Core could be used as Electives, and 3. Any combination of Elective Units from Schedules 1 and 2 detailed in the Schedule of Electives within this Qualification Structure where the sum of the weighting value is no less than 450 points (with a minimum of 225 weighting points drawn from Schedule 2), or, 4. Imported Units from any other Training Package at a similar AQF level qualification. Imported Units must be approved and valued by the National Generation Training Group for them to contribute to the required 450 points, and 5. All Prerequisite requirements (no weighting points). <p>Note:</p> <ul style="list-style-type: none"> • Schedules 1 and 2 forms an integral part of this qualification • Only units nominated as Core and Stream Core units can be recognised when they appear as Core or Stream Core in another qualification. • No provision exists for the double counting of Core and Steam Core Units as Elective Unit points towards a second qualification. • Once an Elective Unit of Competence has been achieved and the points gained have counted towards a qualification the points cannot be used again to contribute towards any other qualification. 	
Core Units – All required	
UEPOPS201A	Comply with Occupational Health and Safety Policy and Procedures
UEPOPS202A	Apply Quality Systems to Work
UEPOPS203A	Operate and Monitor Communications Systems
UEPOPS204A	Maintain and Utilise Records
UEPOPS356A	Apply Environmental and Sustainable Energy Procedures
And the required stream core units for the qualification – Certificate II in ESI Generation (Operations Support)	

UEP30206	Certificate III in ESI Generation (Operations)
Stream Core – Must have 6 of 7 units	
BSBCMN302A	Plan and Organise Own Work
UEPOPS301A	Conduct Single Energy Source Isolation Procedures for Permit to Work
UEPOPS338A	Facilitate Effective Workplace Communications
UEPOPS348A	Respond to Critical Incidents
UEPOPS352A	Conduct Operational Checks on In Service Mechanical Plant
UEPOPS353A	Conduct Operational Checks on In Service Electrical Plant
UEPOPS439A	Plan and Organise Work
Elective Units – 450 points from any combination of units from Schedules 1 & 2, with a minimum of 225 weighting points drawn from Schedule 2.	

End of qualification

Certificate IV

UEP40106	Certificate IV in ESI Generation (Systems Operations)
<p>Completion requirements</p> <p>The requirements for granting this qualification is the successful completion:</p> <ol style="list-style-type: none"> 1. All the Core Units (no weighting points attached to Core Units) and the required stream core units for the qualification – Certificate III in ESI Generation (Systems Operations), and 2. All six (6) nominated Stream Core Units (no weighting points attached to Stream Core Units). Unit/s not selected as Stream Core could be used as Electives, and 3. Any combination of Elective Units from Schedules 1, 2, 4 and 5 detailed in the Schedule of Electives within this Qualification Structure where the sum of the weighting value is no less than 600 points, (with a minimum of 300 weighting points drawn from Schedule 4), or, 4. Imported Units from any other Training Package at a similar AQF level qualification. Imported Units must be approved and valued by the National Generation Training Group for them to contribute to the required 600 points, and 5. All Prerequisite requirements (no weighting points). <p>Note:</p> <ul style="list-style-type: none"> • Schedules 1, 2, 4 and 5 forms an integral part of this qualification • Only units nominated as Core and Stream Core units can be recognised when they appear as Core or Stream Core in another qualification. • No provision exists for the double counting of Core and Steam Core Units as Elective Unit points towards a second qualification. • Once an Elective Unit of Competence has been achieved and the points gained have counted towards a qualification the points cannot be used again to contribute towards any other qualification. 	
Core Units – All required	
UEPOPS203A	Operate and Monitor Communications Systems
UEPOPS337A	Maintain Quality Systems within the Team
UEPOPS401A	Monitor Compliance with Occupational Health and Safety Policy and Procedures
UEPOPS417A	Monitor and Implement Environmental Plans and Procedures
And the required stream core units for the qualification – Certificate III in ESI Generation (Systems Operations)	
Stream Core – Must have ALL 6 units	
UEPOPS348A	Respond to Critical Incidents
UEPOPS420A	Coordinate the Network System
UEPOPS423A	Plan a Scheduled Outage
UEPOPS426A	Interpret and Analyse Multi-Operation Protection Devices

UEP40106	Certificate IV in ESI Generation (Systems Operations)
UEPOPS428A	Develop H.V Switching Programs
UEPOPS442A	Coordinate Team Activities
Elective Units – 600 points from any combination of units from Schedules 1, 2, 4 & 5 (with a minimum of 300 weighting points drawn from Schedule 4)	

End of qualification

UEP40206	Certificate IV in ESI Generation (Operations)
Completion requirements	
The requirements for granting this qualification is the successful completion:	
<ol style="list-style-type: none"> 1. All the Core Units (no weighting points attached to Core Units) and the required stream core units for the qualification – Certificate III in ESI Generation (Operations), and 2. Five (5) of seven (7) nominated Stream Core Units (no weighting points attached to Stream Core Units). Unit/s not selected as Stream Core could be used as Electives, and 3. Any combination of Elective Units from Schedules 1, 2, 4 and 5 detailed in the Schedule of Electives within this Qualification Structure where the sum of the weighting value is no less than 600 points, (with a minimum of 300 weighting points drawn from Schedule 4), or, 4. Imported Units from any other Training Package at a similar AQF level qualification. Imported Units must be approved and valued by the National Generation Training Group for them to contribute to the required 600 points, and 5. All Prerequisite requirements (no weighting points). 	
Note:	
<ul style="list-style-type: none"> • Schedules 1, 2, 4 and 5 forms an integral part of this qualification • Only units nominated as Core and Stream Core units can be recognised when they appear as Core or Stream Core in another qualification. • No provision exists for the double counting of Core and Steam Core Units as Elective Unit points towards a second qualification. • Once an Elective Unit of Competence has been achieved and the points gained have counted towards a qualification the points cannot be used again to contribute towards any other qualification. 	
Core Units – All required	
UEPOPS203A	Operate and Monitor Communications Systems
UEPOPS337A	Maintain Quality Systems within the Team
UEPOPS401A	Monitor Compliance Occupational Health and Safety Policy and Procedures
UEPOPS417A	Monitor and Implement the Application of Environmental Plans and Procedures
And the required stream core units for the qualification – Certificate III in ESI Generation (Operations)	

UEP40206	Certificate IV in ESI Generation (Operations)
Stream Core – Must have 5 of 7 units	
UEPOPS402A	Conduct Multiple Energy Source Isolation Procedures for procedures for a Permit to Work
UEPOPS403A	Coordinate Permit to Work System
UEPOPS405A	Operate and Monitor AC Electrical Systems
UEPOPS406A	Operate and Monitor DC Electrical Systems
UEPOPS424A	Coordinate Local H.V. Networks
UEPOPS426A	Interpret and Analyse Multi-Operation Protection Devices
UEPOPS442A	Coordinate Team Activities
Elective Units – 600 points from any combination of units from Schedules 1, 2, 4 & 5 (with a minimum of 300 weighting points drawn from Schedule 4)	

End of qualification

UEP40306	Certificate IV in ESI Generation Maintenance (Mechanical)
Completion requirements	
<p>The requirements for granting this qualification is the successful completion:</p> <ol style="list-style-type: none"> 1. All the Core Units (no weighting points attached to Core Units), and 2. Five (5) of seven (7) nominated Stream Core Units (no weighting points attached to Stream Core Units). Unit/s not selected as Stream Core could be used as Electives, and 3. Any combination of Elective Units from Schedules 3, 4 and 5 detailed in the Schedule of Electives within this Qualification Structure where the sum of the weighting value is no less than 600 points, with a minimum of 300 weighting points drawn from Schedule 5), or, 4. Imported Units from any other Training Package at a similar AQF level qualification. Imported Units must be approved and valued by the National Generation Training Group for them to contribute to the required 600 points, and 5. All Prerequisite requirements (no weighting points) including a relevant trade certificate. 	
Note:	
<ul style="list-style-type: none"> • Schedules 3, 4 and 5 forms an integral part of this qualification • Only units nominated as Core and Stream Core units can be recognised when they appear as Core or Stream Core in another qualification. • No provision exists for the double counting of Core and Steam Core Units as Elective Unit points towards a second qualification. • Once an Elective Unit of Competence has been achieved and the points gained have counted towards a qualification the points cannot be used again to contribute towards any other qualification. 	
Core Units – All required	
UEPOPS203A	Operate and Monitor Communications Systems
UEPOPS337A	Maintain Quality Systems within the Team
UEPOPS401A	Monitor Compliance Occupational Health and Safety Policy and

UEP40306	Certificate IV in ESI Generation Maintenance (Mechanical)
	Procedures
UEPOPS417A	Monitor and Implement the Application of Environmental Plans and Procedures
Stream Core – Must have 5 of 7 units	
UEPOPS338A	Facilitate Effective Workplace Communications
UEPOPS439A	Plan and Organise Work
UEPMNT401A	Install and Maintain Complex Mechanical Seals
UEPMNT402A	Conduct Complex Levelling and Alignment
UEPMNT403A	Maintain Complex Mechanical Valves
UEPMNT404A	Maintain Complex Mechanical Pumps
UEPMNT421A	Conduct Technical Inspections of Process Plant and Equipment
Elective Units – 600 points from any combination of units from Schedules 3, 4 & 5 (with a minimum of 300 weighting points drawn from Schedule 5)	

End of qualification

UEP40406	Certificate IV in ESI Generation Maintenance (Fabrication)
Completion requirements	
The requirements for granting this qualification is the successful completion:	
<ol style="list-style-type: none"> 1. All the Core Units (no weighting points attached to Core Units), and 2. All five (5) nominated Stream Core Units (no weighting points attached to Stream Core Units). Unit/s not selected as Stream Core could be used as Electives, and 3. Any combination of Elective Units from Schedules 3, 4 and 5 detailed in the Schedule of Electives within this Qualification Structure where the sum of the weighting value is no less than 600 points, (with a minimum of 300 weighting points drawn from Schedule 5), or, 4. Imported Units from any other Training Package at a similar AQF level qualification. Imported Units must be approved and valued by the National Generation Training Group for them to contribute to the required 600 points, and 5. All Prerequisite requirements (no weighting points) including a relevant trade certificate. 	
Note:	
<ul style="list-style-type: none"> • Schedules 3, 4 and 5 forms an integral part of this qualification • Only units nominated as Core and Stream Core units can be recognised when they appear as Core or Stream Core in another qualification. • No provision exists for the double counting of Core and Steam Core Units as Elective Unit points towards a second qualification. • Once an Elective Unit of Competence has been achieved and the points gained have counted towards a qualification the points cannot be used again to contribute towards any other qualification. 	
Core Units – All required	

UEP40406	Certificate IV in ESI Generation Maintenance (Fabrication)
UEPOPS201A	Operate and Monitor Communications Systems
UEPOPS338A	Maintain Quality Systems within the Team
UEPOPS401A	Monitor Compliance Occupational Health and Safety Policy and Procedures
UEPOPS417A	Monitor and Implement the Application of Environmental Plans and Procedures
Stream Core – Must have 5 of 5 units	
UEPMNT302A	Install and Maintain Industrial Pipework
UEPOPS338A	Facilitate Effective Workplace Communications
UEPOPS439A	Plan and Organise Work
UEPMNT409A	Conduct Welding Inspections/Supervision
UEPMNT421A	Conduct Technical Inspections of Process Plant and Equipment
Elective Units – 600 points from any combination of units from Schedules 3, 4 & 5 (with a minimum of 300 weighting points drawn from Schedule 5)	

End of qualification

UEP40506	Certificate IV in ESI Generation Maintenance (Electrical/Electronic)
<p>Completion requirements</p> <p>The requirements for granting this qualification is the successful completion:</p> <ol style="list-style-type: none"> 1. All the Core Units (no weighting points attached to Core Units), and 2. Five (5) of nine (9) nominated Stream Core Units (no weighting points attached to Stream Core Units). Unit/s not selected as Stream Core could be used as Electives, and 3. Any combination of Elective Units from Schedules 3, 4 and 5 detailed in the Schedule of Electives within this Qualification Structure where the sum of the weighting value is no less than 600 points, (with a minimum of 300 weighting points drawn from Schedule 5), or, 4. Imported Units from any other Training Package at a similar AQF level qualification. Imported Units must be approved and valued by the National Generation Training Group for them to contribute to the required 600 points, and 5. All Prerequisite requirements (no weighting points) including a relevant trade certificate. <p>Note:</p> <ul style="list-style-type: none"> • Schedules 3, 4 and 5 forms an integral part of this qualification • Only units nominated as Core and Stream Core units can be recognised when they appear as Core or Stream Core in another qualification. • No provision exists for the double counting of Core and Steam Core Units as Elective Unit points towards a second qualification. • Once an Elective Unit of Competence has been achieved and the points gained have counted towards a qualification the points cannot be used again to contribute towards any other qualification. 	

UEP40506	Certificate IV in ESI Generation Maintenance (Electrical/Electronic)
Core Units – All required	
UEPOPS203A	Operate and Monitor Communications Systems
UEPOPS337A	Maintain Quality Systems within the Team
UEPOPS401A	Monitor Compliance Occupational Health and Safety Policy and Procedures
UEPOPS417A	Monitor and Implement Environmental Plans and Procedures
Stream Core – Must have 5 of 9 units	
UEPOPS338A	Facilitate Effective Workplace Communications
UEPOPS353A	Conduct Operational Checks on In-service Electrical Plant
UEPOPS439A	Plan and Organise Work
UEPMNT410A	Diagnose and Repair Faults in Electronic Equipment
UEPMNT411A	Diagnose and Repair Faults in Complex Electrical Equipment
UEPMNT414A	Test and Commission Complex Electrical Equipment
UEPMNT427A	Diagnose and Repair Faults in Complex Instrumentation Equipment
UEPMNT430A	Test and Commission Complex Instrumentation Equipment
UEPMNT431A	Test and Commission Electronic Instrumentation Equipment
Elective Units – 600 points from any combination of units from Schedules 3, 4 & 5 (with a minimum of 300 weighting points drawn from Schedule 5)	

End of qualification

Diploma

UEP50106	Diploma of ESI Generation (Systems Operations)
<p>Completion requirements</p> <p>The requirements for granting this qualification is the successful completion:</p> <ol style="list-style-type: none"> 1. All the Core Units (no weighting points attached to Core Units) and the required stream core units for the qualification – Certificate IV in ESI Generation (Systems Operations), and 2. Must acquire five (5) of the nine (9) nominated Stream Core Units (no weighting points attached to Stream Core Units). Unit/s not selected as Stream Core could be used as Electives, and 3. Any combination of Elective Units from Schedules 1, 2, 4, 6 and 8 detailed in the Schedule of Electives within this Qualification Structure where the sum of the weighting value is no less than 750 points, (with a minimum of 375 weighting points drawn from Schedule 6), or, 4. Imported Units from any other Training Package. However imported Units must be approved and valued by the National Generation Training group in order for them to contribute to the required 750 points, and 5. All Prerequisite requirements. <p>Note:</p> <ul style="list-style-type: none"> • Schedules 1, 2, 4, 6 and 8 forms an integral part of this qualification • Only Core and Stream Core Units can be recognised when they appear as Core or Stream Core in another qualification. • No provision exists for the double counting of Core and Steam Core Units as Elective Unit points towards a second qualification. • Once an Elective Unit of Competence has been achieved and the points gained have been counted towards a qualification the points cannot be used again to contribute towards any other qualification. 	
Core Units – All required	
UEPOPS203A	Operate and Monitor Communications Systems
UEPOPS337A	Maintain Quality Systems within the Team
UEPOPS417A	Monitor and Implement Environmental Plans and Procedures
UEPOPS501A	Manage Occupational Health and Safety Policy and Procedures
And the required stream core units for the qualification – Certificate IV in ESI Generation (Systems Operations)	
Stream Core Units – Must have 5 of 9 units	
UEPOPS350A	Develop Contingency Plans
UEPOPS443A	Operate and Monitor System Equipment
UEPOPS415A	Perform Cost Estimations
UEPOPS421A	Manage Critical Incidents

UEP50106	Diploma of ESI Generation (Systems Operations)
UEPOPS404A	Coordinate First Response Team Operation
UEPOPS429A	Coordinate and Direct Switching Program
UEPOPS514A	Manage the Network/Systems
UEPOPS515A	Manage Operational Crisis to Maintain/Restore Power System Integrity
UEPOPS517A	Coordinate Power Generation
Elective Units – 750 points from any combination of units from Schedules 1, 2, 4, 6 and 8, (with a minimum of 375 weighting points drawn from Schedules 4 & 6)	

End of qualification

UEP50206	Diploma of ESI Generation (Operations)
<p>Completion requirements</p> <p>The requirements for granting this qualification is the successful completion:</p> <ol style="list-style-type: none"> 1. All the Core Units (no weighting points attached to Core Units) and the required stream core units for the qualification – Certificate IV in ESI Generation (Operations), and 2. Must acquire five (5) of the nine (9) nominated Stream Core Units (no weighting points attached to Stream Core Units). Unit/s not selected as Stream Core could be used as Electives, and 3. Any combination of Elective Units from Schedules 1, 2, 4, 6 and 8 detailed in the Schedule of Electives within this Qualification Structure where the sum of the weighting value is no less than 750 points, , (with a minimum of 375 weighting points drawn from Schedule 4 and/or 6), or, 4. Imported Units from any other Training Package. However imported Units must be approved and valued by the National Generation Training group in order for them to contribute to the required 750 points, and 5. All Prerequisite requirements. <p>Note:</p> <ul style="list-style-type: none"> • Schedules 1, 2, 4, 6 and 8 forms an integral part of this qualification • Only Core and Stream Core Units can be recognised when they appear as Core or Stream Core in another qualification. • No provision exists for the double counting of Core and Steam Core Units as Elective Unit points towards a second qualification. • Once an Elective Unit of Competence has been achieved and the points gained have been counted towards a qualification the points cannot be used again to contribute towards any other qualification. 	
Core Units – All required	
UEPOPS203A	Operate and Monitor Communications Systems
UEPOPS337A	Maintain Quality Systems within the Team
UEPOPS417A	Monitor and Implement Environmental Plans and Procedures
UEPOPS501A	Manage Occupational Health and Safety Policy and Procedures

UEP50206	Diploma of ESI Generation (Operations)
And the required stream core units for the qualification – Certificate IV in ESI Generation (Operations)	
Stream Core Units – Must have 5 of the 9 units	
UEPOPS358A	Coordinate Electrical Energy Production
UEPOPS422A	Schedule Generation
UEPOPS502A	Manage Permit to Work System
UEPOPS508A	Establish and Implement Operational Strategies for Power Production
UEPOPS509A	Conduct Project Management
UEPOPS511A	Manage Quality Control Procedures
UEPOPS512A	Monitor Power Generation Plant Reliability
UEPOPS515A	Manage Operational Crisis to Maintain/Restore Power System Integrity
UEPOPS517A	Coordinate Power Generation
Elective Units – 750 points from any combination of units from Schedules 1, 2, 4, 6 and 8, (with a minimum of 375 weighting points drawn from Schedule 4 and/or 6)	

End of qualification

UEP50306	Diploma of ESI Generation (Maintenance)
Completion requirements	
<p>The requirements for granting this qualification is the successful completion:</p> <ol style="list-style-type: none"> 1. All the Core Units (no weighting points attached to Core Units) and the qualification – Certificate IV in ESI Generation Maintenance (Electrical/Electronic) or Certificate IV in ESI Generation Maintenance (Fabrication) or Certificate IV in ESI Generation Maintenance (Mechanical), and 2. Must acquire five (5) of the eight (8) nominated Stream Core Units (no weighting points attached to Stream Core Units). Unit/s not selected as Stream Core could be used as Electives, and 3. Any combination of Elective Units from Schedules 3, 5, 6 and 8 detailed in the Schedule of Electives within this Qualification Structure where the sum of the weighting value is no less than 750 points, (with a minimum of 375 weighting points drawn from Schedules 5 & 6), or, 4. Imported Units from any other Training Package. However imported Units must be approved and valued by the National Generation Training group in order for them to contribute to the required 750 points, and 5. All Prerequisite requirements. 	
Note:	
<ul style="list-style-type: none"> • Schedules 3, 5, 6 and 8 forms an integral part of this qualification • Only Core and Stream Core Units can be recognised when they appear as Core or Stream Core in another qualification. • No provision exists for the double counting of Core and Steam Core Units as Elective Unit points towards a second qualification. 	

UEP50306	Diploma of ESI Generation (Maintenance)
<ul style="list-style-type: none"> Once an Elective Unit of Competence has been achieved and the points gained have been counted towards a qualification the points cannot be used again to contribute towards any other qualification. 	
Core Units – All required	
UEPOPS203A	Operate and Monitor Communications Systems
UEPOPS337A	Maintain Quality Systems within the Team
UEPOPS417A	Monitor and Implement Environmental Plans and Procedures
UEPOPS501A	Manage Occupational Health and Safety Policy and Procedures
And the qualification – Certificate IV in ESI Generation Maintenance (Electrical/Electronic) or Certificate IV in ESI Generation Maintenance (Fabrication) or Certificate IV in ESI Generation Maintenance (Mechanical)	
Stream Core – Must have 5 of 8 units	
UEPOPS416A	Monitor the Implementation of Enterprises Production/Maintenance Quality Control Procedures
UEPOPS442A	Coordinate Team Activities
UEPMNT421A	Conduct Technical Inspection of Process Plant and Equipment
UEPMNT423A	Conduct Condition Monitoring
UEPOPS506A	Produce Maintenance Strategies for Generation Production Plant
UEPOPS509A	Conduct Project Management
UEPOPS510A	Manage Commissioning/Decommissioning
UEPOPS512A	Monitor Power Generation Plant Reliability
Elective Units – 750 points from any combination of units from Schedules 3, 5, 6 & 8 (with a minimum of 375 weighting points drawn from Schedules 5 & 6)	

End of qualification

UEP50406	Diploma of ESI Generation (Electrical/Electronic)
<p>Completion requirements</p> <p>The requirements for granting this qualification is the successful completion:</p> <ol style="list-style-type: none"> All the Core Units (no weighting points attached to Core Units) and the qualification – Certificate IV in ESI Generation Maintenance (Electrical/Electronic), and Must acquire five (5) of the nine (9) of nominated Stream Core Units (no weighting points attached to Stream Core Units). Unit/s not selected as Stream Core could be used as Electives, and Any combination of Elective Units from Schedules 3, 5, 6, 7 and 8 detailed in the Schedule of Electives within this Qualification Structure where the sum of the weighting value is no less than 750 points, (with a minimum of 375 weighting points drawn from Schedules 6 or 7), or, 	

UEP50406	Diploma of ESI Generation (Electrical/Electronic)
<p>4. Imported Units from any other Training Package. However imported Units must be approved and valued by the National Generation Training group in order for them to contribute to the required 750 points, and</p> <p>5. All Prerequisite requirements.</p> <p>Note:</p> <ul style="list-style-type: none"> • Schedules 3, 5, 6, 7 and 8 forms an integral part of this qualification • Only Core and Stream Core Units can be recognised when they appear as Core or Stream Core in another qualification. • No provision exists for the double counting of Core and Steam Core Units as Elective Unit points towards a second qualification. • Once an Elective Unit of Competence has been achieved and the points gained have been counted towards a qualification the points cannot be used again to contribute towards any other qualification. 	
Core Units – All required	
UEPOPS203A	Operate and Monitor Communications Systems
UEPOPS337A	Maintain Quality Systems within the Team
UEPOPS417A	Monitor and Implement the Application of Environmental Plans and Procedures
UEPOPS501A	Manage Occupational Health and Safety Policy and Procedures
And the qualification – Certificate IV in ESI Generation Maintenance (Electrical/Electronic)	
Stream Core – Must have 5 of 9 units	
UEPOPS442A	Coordinate Team Activities
UEPOPS509A	Conduct Project Management
UEPOPS510A	Manage Commissioning/Decommissioning
UEPOPS511A	Manage Quality Control Procedures
UEPOPS513A	Tune Process Plant and Equipment
UEPMNT501A	Diagnose & Repair Faults in Electronic/Electrical Systems
UEPMNT502A	Test and Commission Electrical/Electronic Systems
UEPMNT503A	Diagnose and Repair Faults in Instrumentation Systems
UEPMNT504A	Test and Commission Instrumentation Systems
Elective Units – 750 points from any combination of units from Schedules 3, 5, 6, 7 & 8 (with a minimum of 375 weighting points drawn from Schedules 6 or 7)	

End of qualification

Schedule of Electives to Qualifications Structure

The following Schedules form an Integral Part of each Qualification structure. There are eight (8) Schedules of Electives, aligned to respective Qualifications of this Training Package. They are summarised in the following table and then detailed individually thereafter.

Users are able to draw electives from the Schedules as detailed in the qualification packaging rules included in qualification completion requirements.

The Schedules are as follows:

SCHEDULE	DISCIPLINE	SERIES
SCHEDULE 1	Operations Units AQF 2	UEPOPS201A – UEPOPS250A
SCHEDULE 2	Operations Units AQF 3	UEPOPS301A – UEPOPS357A
SCHEDULE 3	Maintenance Units AQF 3	UEPMNT301A – UEPMNT360A
SCHEDULE 4	Operations Units AQF 4	UEPOPS401A – UEPOPS442A
SCHEDULE 5	Maintenance Units AQF 4	UEPMNT401A – UEPMNT433A
SCHEDULE 6	Operations Units AQF 5	UEPOPS501A – UEPOPS515A
SCHEDULE 7	Maintenance Units AQF 5	UEPMNT501A – UEPMNT504A
SCHEDULE 8	Imported Units	

Note:

Where prerequisites in the following table indicate ‘Trade Certificate needed’, the competency standard units should be reviewed for relevant comment. The following typically applies:

Entry to the Maintenance Certificate IV qualifications requires the completion of a Trade Certificate III that includes the relevant prerequisite units of competence from this Training Package or a Certificate III trade qualification from the National Electrotechnology or the Metals and Engineering Training Packages. Points achieved for units completed cannot be double counted towards other qualifications.

‘Trade may apply’ refers to units that may be undertaken as part of an apprenticeship program under the auspices of a regulated contract prescribed by a relevant State/Territory. Relevant information should be obtained from the State/Territory training authority and related regulator, where applicable, to confirm requirements.

Schedule 1: Units UEPOPS201A – UEPOPS250A

The following Schedule forms an Integral Part of a relevant qualification structure; it must be read and used in conjunction with such.

CODE	UNIT TITLE	Notional AQF Level	WEIGHTING POINTS	Prerequisites (for relevant prerequisite or co-requisite refer respective unit)	UTP98 UNIT CODE
UEPOPS201A	Comply with Occupational Health and Safety Policy and Procedures	2	30	None	UTPNEG001A
UEPOPS202A	Apply Quality Systems To Work	2	30	None	UTPNEG204A
UEPOPS203A	Operate and Monitor Communications Systems	2	30	None	UTPNEG268A
UEPOPS204A	Maintain and Utilise Records	2	30	None	UTPNEG270A
UEPOPS205A	Conduct Minor Mechanical Maintenance	2	30	None	UTPNEG079A
UEPOPS206A	Conduct Minor Electrical Maintenance	2	30	None	UTPNEG136A
UEPOPS207A	Perform Plant Lubrication	2	30	None	UTPNEG178A
UEPOPS208A	Operate Local Systems	2	35	None	UTPNEG189A
UEPOPS209A	Perform Process Plant Inspections	2	30	None	UTPNEG238A
UEPOPS210A	Conduct First Response within a Workplace Team	2	40	None	UTPNEG007A
UEPOPS211A	Clean Plant and Equipment	2	30	None	UTPNEG015A
UEPOPS212A	Perform Basic Rigging Work	2	30	UEPOPS201A UEPOPS214A	UTPNEG016A
UEPOPS213A	Perform Intermediate Rigging Work	2	30	UEPOPS212A UEPOPS302A	UTPNEG017A
UEPOPS214A	Perform Dogging Work	2	30	UEPOPS201A UEPOPS212A	UTPNEG019A
UEPOPS215A	Perform Basic Scaffolding	2	30	UEPOPS201A	UTPNEG020A
UEPOPS216A	Perform Intermediate Scaffolding	2	30	UEPOPS215A	UTPNEG021A
UEPOPS217A	Conduct Elevating Work Platform Operations	2	30	UEPOPS201A	UTPNEG027B
UEPOPS218A	Shift and Transfer Materials using a Bulldozer	2	40	UEPOPS201A	UTPNEG028Ba
UEPOPS219A	Shift and Transfer Materials using a Grader	2	40	UEPOPS201A	UTPNEG028Ba

Schedule 1: Units UEPOPS201A – UEPOPS250A (cont)

The following Schedule forms an Integral Part of a relevant qualification structure; it must be read and used in conjunction with such.

CODE	UNIT TITLE	Notional AQF Level	WEIGHTING POINTS	Prerequisites (for relevant prerequisite or co-requisite refer respective unit)	UTP98 UNIT CODE
UEPOPS220A	Shift and Transfer Materials using a Scraper	2	40	UEPOPS201A	UTPNEG028Bb
UEPOPS221A	Shift and Transfer Materials using a Front end loader	2	40	UEPOPS201A	UTPNEG028Bc
UEPOPS222A	Shift and Transfer Materials using a Skidsteer loader	2	40	UEPOPS201A	UTPNEG028Bd
UEPOPS223A	Shift and Transfer Materials using a Telescopic materials handler-loader	2	40	UEPOPS201A	UTPNEG028Be
UEPOPS224A	Shift and Transfer Materials using a Backhoe	2	40	UEPOPS201A	UTPNEG028Bf
UEPOPS225A	Shift and Transfer Materials using an Excavator	2	40	UEPOPS201A	UTPNEG028Bg
UEPOPS226A	Shift and Transfer Materials using Bobcats – wheeled and tracked	2	40	UEPOPS201A	UTPNEG028Bh
UEPOPS227A	Shift and Transfer Materials using Borers and related attachments	2	40	UEPOPS201A	UTPNEG028Bi
UEPOPS228A	Conduct Forklift Operations	2	30	UEPOPS201A	UTPNEG029A
UEPOPS229A	Operate Lifting and Load Shifting Equipment for loads less than ten tonnes	2	30	UEPOPS201A	UTPNEG030A
UEPOPS230A	Operate Lifting and Load Shifting Equipment for loads greater than ten tonnes	2	35	UEPOPS229A	UTPNEG031A
UEPOPS231A	Operate Explosive Powered Tools	2	30	UEPOPS201A	UTPNEG032A
UEPOPS232A	Transport Plant and Equipment	2	30	UEPOPS201A	UTPNEG038A
UEPOPS233A	Perform Machining Operations	2	35	None	UTPNEG080A
UEPOPS234A	Perform Routine Oxy-Acetylene (Fuel Gas) Welding (OAW)	2	30	None	UTPNEG111A
UEPOPS235A	Perform Routine Manual Arc Welding	2	30	None	UTPNEG112A
UEPOPS236A	Perform Manual Heating, Thermal Cutting and Gouging	2	30	None	UTPNEG113A
UEPOPS237A	Perform Tool Store Duties	2	30	None	UTPNEG114A
UEPOPS238A	Maintain Battery Banks and Cells	2	30	None	UTPNEG133A
UEPOPS239A	Conduct Minor/Basic Electrical Maintenance	2	30	None	UTPNEG136A
UEPOPS240A	Operate and Monitor Fuel Supply (Coal)	2	40	None	UTPNEG152A

Schedule 1: Units UEPOPS201A – UEPOPS250A (cont)

The following Schedule forms an Integral Part of a relevant qualification structure; it must be read and used in conjunction with such.

CODE	UNIT TITLE	Notional AQF Level	WEIGHTING POINTS	Prerequisites (for relevant prerequisite or co-requisite refer respective unit)	UTP98 UNIT CODE
UEPOPS241A	Operate and Monitor Ash and Dust Disposal Plant	2	40	None	UTPNEG153A
UEPOPS242A	Operate and Monitor Dust Collection Plant	2	40	None	UTPNEG154A
UEPOPS243A	Operate Air Conditioning Plant	2	30	None	UTPNEG163A
UEPOPS244A	Operate and Monitor Site Services Water Systems	2	30	None	UTPNEG164A
UEPOPS245A	Conduct Chemical Batching Operations	2	30	None	UTPNEG176A
UEPOPS246A	Operate Waste and Contaminated Water Plant	2	35	None	UTPNEG177A
UEPOPS247A	Operate and Monitor an Internal Combustion Single Fuel Reciprocating Engine	2	40	None	UTPNEG191A
UEPOPS248A	Operate and Monitor an Internal Combustion Dual Fuel Reciprocating Engine	2	40	None	UTPNEG192A
UEPOPS249A	Liaise with Stakeholders	2	30	None	UTPNEG269A
UEPOPS250A	Perform process plant inspections	2	35	None	UTPNEG238A

Schedule 2: Units UEPOPS301A – UEPOPS356A

The following Schedule forms an Integral Part of a relevant qualification structure; it must be read and used in conjunction with such.

CODE	UNIT TITLE	Notional AQF Level	WEIGHTING POINTS	Prerequisites (for relevant prerequisite or co-requisite refer respective unit)	UTP98 UNIT CODE
UEPOPS301A	Conduct Single Energy Source Isolation Procedures for Permit to Work	3	90	UEPOPS201A	UTPNEG004A
UEPOPS302A	Perform Advanced Rigging Work	3	90	UEPOPS213B	UTPNEG018A
UEPOPS303A	Perform Advanced Scaffolding	3	90	UEPOPS216A	UTPNEG022A
UEPOPS304A	Make and Spread a Stockpile	3	100	UEPOPS201A	UTPNEG045A
UEPOPS305A	Operate & Monitor Briquette Coal Cooling Plant	3	80	UEPOPS201A	UTPNEG048A
UEPOPS306A	Operate & Monitor Briquette Coal Drying Plant	3	80	UEPOPS201A	UTPNEG049A
UEPOPS307A	Operate & Monitor Briquette Coal Press Plant	3	80	UEPOPS201A	UTPNEG050A
UEPOPS308A	Perform Briquette Laboratory Tests	3	80	UEPOPS201A	UTPNEG051A
UEPOPS309A	Operate and Monitor Air Conditioning Equipment and Ventilation Systems	3	100	None	UTPNEG134A
UEPOPS310A	Operate Bulk Coal Handling Plant	3	100	None	UTPNEG150A
UEPOPS311A	Operate Fabric Filter Dust Collection Plant	3	90	None	UTPNEG155A
UEPOPS312A	Operate and Monitor Fuel Supply (Biomass)	3	80	None	UTPNEG156A
UEPOPS313A	Operate and Monitor Boiler Draught System	3	90	None	UTPNEG157A
UEPOPS314A	Operate and Monitor Fuel Firing Plant (Gas or Oil)	3	90	None	UTPNEG159A
UEPOPS315A	Operate and Monitor Fuel Firing Plant (Coal)	3	90	None	UTPNEG161A
UEPOPS316A	Operate and Monitor Boiler Steam/Water Cycle	3	90	None	UTPNEG162A
UEPOPS317A	Operate and Monitor Fixed Fire Protection Systems	3	80	None	UTPNEG165A
UEPOPS318A	Operate and Monitor Compressed Gas Systems	3	90	None	UTPNEG166A
UEPOPS319A	Operate and Monitor Gas Production Plant	3	80	None	UTPNEG167A
UEPOPS320A	Operate and Monitor Compressed Air Systems	3	90	None	UTPNEG168A

Schedule 2: Units UEPOPS301A – UEPOPS356A (cont)

The following Schedule forms an Integral Part of a relevant qualification structure; it must be read and used in conjunction with such.

CODE	UNIT TITLE	Notional AQF Level	WEIGHTING POINTS	Prerequisites (for relevant prerequisite or co-requisite refer respective unit)	UTP98 UNIT CODE
UEPOPS321A	Operate and Monitor Water Treatment Plant	3	90	None	UTPNEG171A
UEPOPS322A	Operate and Monitor Alkalinity Reduction Plant	3	80	None	UTPNEG172A
UEPOPS323A	Operate and Monitor Reverse Osmosis Plant	3	80	None	UTPNEG173A
UEPOPS324A	Operate and Monitor Brine Concentrator Plant	3	80	None	UTPNEG174A
UEPOPS325A	Operate and Monitor Water Quality Control Systems	3	90	None	UTPNEG175A
UEPOPS326A	Operate and Monitor Oil Systems	3	90	None	UTPNEG179A
UEPOPS327A	Monitor and Maintain Civil Assets	3	90	None	UTPNEG180A
UEPOPS328A	Undertake Dam Safety Surveillance	3	90	None	UTPNEG181A
UEPOPS329A	Operate and Monitor Auxiliary Steam Systems	3	90	None	UTPNEG182A
UEPOPS330A	Operate and Monitor Heat Exchangers	3	90	None	UTPNEG183A
UEPOPS331A	Operate and Monitor Water Systems (Condensate & Feedwater)	3	90	None	UTPNEG184A
UEPOPS332A	Operate and Monitor Condensing and Cooling Water System	3	90	None	UTPNEG185A
UEPOPS333A	Operate and Monitor H.R.S.G. Hot Gas Control System	3	90	None	UTPNEG186A
UEPOPS334A	Operate and Monitor a Wind Generator	3	80	None	UTPNEG190A
UEPOPS335A	Operate A Hydro Generator Synchronous Condenser/Pump Unit	3	90	None	UTPNEG193A
UEPOPS336A	Operate and Monitor a Gas Turbine	3	90	None	UTPNEG196A
UEPOPS337A	Maintain Quality Systems within the Team	3	80	UEPOPS202A	UTPNEG201A
UEPOPS338A	Facilitate Effective Workplace Communication	3	80	None	UTPNEG203A
UEPOPS339A	Operate and Monitor a Boiler Unit	3	90	None	UTPNEG207A
UEPOPS340A	Operate and Monitor a Steam Turbine	3	90	None	UTPNEG210A
UEPOPS341A	Shut Down a Steam Turbine	3	90	None	UTPNEG211A

Schedule 2: Units UEPOPS301A – UEPOPS357A (cont)

The following Schedule forms an Integral Part of a relevant qualification structure; it must be read and used in conjunction with such.

CODE	UNIT TITLE	Notional AQF Level	WEIGHTING POINTS	Prerequisites (for relevant prerequisite or co-requisite refer respective unit)	UTP98 UNIT CODE
UEPOPS342A	Interpret and Analyse Single Operation Protection Devices	3	90	None	UTPNEG276A
UEPOPS343A	Operate Hydro-Electric Generating Plant and Auxiliary Equipment	3	90	None	UTPNEG227A
UEPOPS344A	Conduct Water Conveyance and Control	3	90	None	UTPNEG228A
UEPOPS345A	Implement Dam Safety Surveillance Procedures	3	90	None	UTPNEG229A
UEPOPS346A	Conduct Non-Routine Operational Testing	3	80	None	UTPNEG239A
UEPOPS347A	Operate and Monitor Supervisory, Control and Data Acquisition Systems	3	90	None	UTPNEG266A
UEPOPS348A	Respond to Critical Incidents	3	80	None	UTPNEG272A
UEPOPS349A	Operate H.V. Primary Switchgear	3	80	None	UTPNEG277A
UEPOPS350A	Develop Contingency Plans	3	80	None	UTPNEG278A
UEPOPS351A	Operate H.V. Condition Changing Apparatus	3	80	None	UTPNEG283A
UEPOPS352A	Conduct Operational Checks on In-Service Mechanical Plant	3	80	UEPOPS201A	NEW UNIT
UEPOPS353A	Conduct Operational Checks on In-Service Electrical Plant	3	80	UEPOPS201A	NEW UNIT
UEPOPS354A	Operate and Monitor a Dual Fuel-Firing Plant	3	90	None	NEW UNIT
UEPOPS355A	Monitor the Implementation of Under Frequency Load Shed	3	80	None	NEW UNIT
UEPOPS356A	Apply Environmental and Sustainable Energy Procedures	3	80	None	NEW UNIT
UEPOPS357A	Operate H.V Secondary Switchgear	3	80	None	UTPNEG282A

Schedule 3: Units UEPMNT301A – UEPMNT360A

The following Schedule forms an Integral Part of a relevant qualification structure; it must be read and used in conjunction with such.

CODE	UNIT TITLE	Notional AQF Level	WEIGHTING POINTS	Prerequisites (for relevant prerequisite or co-requisite refer respective unit)	UTP98 UNIT CODE
UEPMNT301A	Install and Maintain Hydraulic/Pneumatic Components	3	90	Trade may apply	UTPNEG058A
UEPMNT302A	Install and Maintain Industrial Pipework	3	90	Trade may apply	UTPNEG059A
UEPMNT303A	Maintain Mechanical Valves	3	90	Trade may apply	UTPNEG062A
UEPMNT304A	Maintain Mechanical Pumps	3	90	Trade may apply	UTPNEG064A
UEPMNT305A	Maintain Industrial Fans	3	90	Trade may apply	UTPNEG066A
UEPMNT306A	Maintain Industrial Transmissions	3	90	Trade may apply	UTPNEG067A
UEPMNT307A	Maintain Industrial Screens, Strainers and Filters	3	90	Trade may apply	UTPNEG069A
UEPMNT308A	Maintain Conveyors and Associated Equipment	3	90	Trade may apply	UTPNEG070A
UEPMNT309A	Maintain Material Feeders	3	100	Trade may apply	UTPNEG071A
UEPMNT310A	Maintain Material Crushers	3	100	Trade may apply	UTPNEG072A
UEPMNT311A	Maintain Fuel Transport Equipment	3	100	Trade may apply	UTPNEG073A
UEPMNT312A	Maintain Industrial Pressure Vessels	3	100	Trade may apply	UTPNEG074A
UEPMNT313A	Maintain Internal Combustion Engines	3	100	Trade may apply	UTPNEG076A
UEPMNT314A	Maintain Hydro Turbines	3	100	UEPMNT402A	UTPNEG077A
UEPMNT315A	Maintain Wind Turbines	3	100	UEPMNT402A	UTPNEG078A
UEPMNT316A	Perform Advanced Machining Operations	3	100	Trade may apply	UTPNEG081A
UEPMNT317A	Diagnose and Repair Faults in Mechanical Equipment	3	90	Trade may apply	UTPNEG082A
UEPMNT318A	Conduct Generator Mechanical Maintenance	3	100	Trade may apply	UTPNEG083A
UEPMNT319A	Maintain and Test Fixed Fire Protection Systems	3	90	Trade may apply	UTPNEG084A
UEPMNT320A	Inspect and Repair/Replace Faults in Mechanical Equipment/Components	3	90	Trade may apply	UTPNEG085A
UEPMNT321A	Weld using Manual Metal Arc Welding Process (MMAW)	3	80	Trade may apply	UTPNEG090A
UEPMNT322A	Weld using Gas Metal Arc Welding Process (GMAW)	3	80	Trade may apply	UTPNEG091A

Schedule 3: Units UEPMNT301A – UEPMNT360A (cont)

The following Schedule forms an Integral Part of a relevant qualification structure; it must be read and used in conjunction with such.

CODE	UNIT TITLE	Notional AQF Level	WEIGHTING POINTS	Prerequisites (for relevant prerequisite or co-requisite refer respective unit)	UTP98 UNIT CODE
UEPMNT323A	Weld using Gas Tungsten Arc Welding Process (GTAW)	3	80	Trade may apply	UTPNEG092A
UEPMNT324A	Weld using Oxyacetylene Welding Process (OAW)	3	80	Trade may apply	UTPNEG093A
UEPMNT325A	Weld using Submerged Arc Welding Process (SAW)	3	80	Trade may apply	UTPNEG094A
UEPMNT326A	Perform Advanced Welding using Manual Metal Arc Welding Process (MMAW)	3	80	Trade may apply	UTPNEG095A
UEPMNT327A	Perform Advanced Welding using Gas Metal Arc Welding (GMAW)	3	80	Trade may apply	UTPNEG096A
UEPMNT328A	Perform Advanced Welding using Gas Tungsten Arc Welding (GTAW)	3	80	Trade may apply	UTPNEG097A
UEPMNT329A	Perform Advanced Welding using Oxyacetylene Welding Process (OAW)	3	80	Trade may apply	UTPNEG098A
UEPMNT330A	Perform Manual Metal Arc Welding Process to Weld to AS1796 Certificate 1/1E (Low Carbon Steel Sheet and Plate)	3	80	Trade may apply	UTPNEG099A
UEPMNT331A	Perform Manual Metal Arc Welding Process to Weld to AS1796 Certificate 2 (Low Carbon Steel Pipe)	3	80	Trade may apply	UTPNEG100A
UEPMNT332A	Perform Manual Metal Arc Welding to Weld to AS1796 Certificate 3/3E (Alloy Steel Plate)	3	80	Trade may apply	UTPNEG101A
UEPMNT333A	Perform Manual Metal Arc Welding Process to Weld to AS1796 Certificate 4 (Alloy Steel Pipe)	3	80	Trade may apply	UTPNEG102A
UEPMNT334A	Perform Gas Tungsten Arc Welding and Manual Metal Arc Welding Processes to Weld to AS1796 Certificate 5 (Alloy Steel Pipe)	3	80	Trade may apply	UTPNEG103A
UEPMNT335A	Perform Oxyacetylene Welding Process (Fuel Gas) to AS1796 Certificate 6/6E	3	80	Trade may apply	UTPNEG104A
UEPMNT336A	Perform Gas Tungsten Arc Welding to Weld to AS1796 Certificate 7 (Pipe)	3	80	Trade may apply	UTPNEG105A
UEPMNT337A	Perform Gas Metal Arc Welding to Weld to AS1796 Certificate 8/8E (Plate and Pipe)	3	80	Trade may apply	UTPNEG106A
UEPMNT338A	Perform Submerged Arc Welding to Weld to AS1796 Certificate 9	3	80	Trade may apply	UTPNEG107A
UEPMNT339A	Perform Sheet Metal Work	3	100	Trade may apply	UTPNEG108A

Schedule 3: Units UEPMNT301A – UEPMNT360A (cont)

The following Schedule forms an Integral Part of a relevant qualification structure; it must be read and used in conjunction with such.

CODE	UNIT TITLE	Notional AQF Level	WEIGHTING POINTS	Prerequisites (for relevant prerequisite or co-requisite refer respective unit)	UTP98 UNIT CODE
UEPMNT340A	Fabricate Metal Structures and Components	3	100	Trade may apply	UTPNEG109A
UEPMNT341A	Repair/Replace/Modify Metal Structures and Components	3	100	Trade may apply	UTPNEG110A
UEPMNT342A	Install Electrical Equipment	3	90	Trade may apply	UTPNEG115A
UEPMNT343A	Install Electrical Wiring Systems	3	90	Trade may apply	UTPNEG116A
UEPMNT344A	Install Complex Electrical Equipment	3	90	Trade may apply	UTPNEG117A
UEPMNT345A	Install Electronic Electrical Equipment	3	90	Trade may apply	UTPNEG118A
UEPMNT346A	Maintain Electrical Equipment	3	90	Trade may apply	UTPNEG119A
UEPMNT347A	Maintain Complex Electrical Equipment	3	90	Trade may apply	UTPNEG120A
UEPMNT348A	Maintain Electrical Electronic Equipment	3	90	Trade may apply	UTPNEG121A
UEPMNT349A	Diagnose and Repair Faults in Electrical Equipment	3	90	Trade may apply	UTPNEG122A
UEPMNT350A	Modify Electrical Equipment	3	90	Trade may apply	UTPNEG126A
UEPMNT351A	Test and Commission Electrical Equipment	3	90	Trade may apply	UTPNEG129A
UEPMNT352A	Test and Commission Electronic Electrical Equipment	3	90	Trade may apply	UTPNEG131A
UEPMNT353A	Install Instrumentation Equipment	3	90	Trade may apply	UTPNEG243A
UEPMNT354A	Install Instrumentation Wiring Systems	3	90	Trade may apply	UTPNEG244A
UEPMNT355A	Install Complex/Electronic Instrumentation Equipment	3	90	Trade may apply	UTPNEG245A
UEPMNT356A	Maintain Instrumentation Equipment	3	90	Trade may apply	UTPNEG246A
UEPMNT357A	Diagnose and Repair Faults in Instrumentation Equipment	3	90	Trade may apply	UTPNEG249A
UEPMNT358A	Modify Instrumentation Equipment	3	90	Trade may apply	UTPNEG252A
UEPMNT359A	Test and Commission Instrumentation Equipment	3	90	Trade may apply	UTPNEG255A
UEPMNT360A	Terminate Fibre Optic Cables	3	80	Trade may apply	UTPNEG259A

Schedule 4: Units UEPOPS401A – UEPOPS442A

The following Schedule forms an Integral Part of a relevant qualification structure; it must be read and used in conjunction with such.

CODE	UNIT TITLE	Notional AQF Level	WEIGHTING POINTS	Prerequisites (for relevant prerequisite or co-requisite refer respective unit)	UTP98 UNIT CODE
UEPOPS401A	Monitor Compliance with Occupational Health and Safety Policy and Procedures	4	120	UEPOPS201A	UTPNEG002A
UEPOPS402A	Conduct Multiple Energy Source Isolation Procedures for Permit to Work	4	130	UEPOPS301A	NEW UNIT
UEPOPS403A	Coordinate Permit to Work System	4	130	UEPOPS402A	UTPNEG005A
UEPOPS404A	Coordinate First Response Team Operation	4	120	UEPOPS201A	UTPNEG008A
UEPOPS405A	Operate and Monitor AC Electrical Systems	4	130	UEPOPS426A	UTPNEG187A
UEPOPS406A	Operate and Monitor DC Electrical Systems	4	120	UEPOPS426A	UTPNEG188A
UEPOPS407A	Start and Run Up A Gas Turbine	4	120	None	UTPNEG195A
UEPOPS408A	Shut Down a Gas Turbine	4	120	None	UTPNEG197A
UEPOPS409A	Start-Up A Boiler Unit	4	130	None	UTPNEG206A
UEPOPS410A	Shut Down A Boiler Unit	4	120	None	UTPNEG208A
UEPOPS411A	Run Up A Steam Turbine	4	130	None	UTPNEG209A
UEPOPS412A	Undertake Operations Commissioning/Decommissioning	4	130	None	UTPNEG217A
UEPOPS413A	Coordinate Operational Strategies for Power Production	4	120	None	NEW UNIT
UEPOPS414A	Perform Risk Analysis of Generation Plant	4	120	None	UTPNEG221A
UEPOPS415A	Perform Cost Estimations	4	120	None	UTPNEG222A
UEPOPS416A	Monitor the Implementation of the Enterprise's Production/Maintenance Quality Control procedures	4	120	UEPOPS338A	NEW UNIT
UEPOPS417A	Monitor and Implement Environmental Plans and Procedures	4	120	None	UTPNEG230A
UEPOPS418A	Deliver and Review Training	4	120	None	UTPNEG205A
UEPOPS419A	Reserved			None	
UEPOPS420A	Coordinate the Network/System	4	130	None	NEW UNIT
UEPOPS421A	Manage Critical Incidents	4	130	None	NEW UNIT

Schedule 4: Units UEPOPS401A – UEPOPS442A (cont)

The following Schedule forms an Integral Part of a relevant qualification structure; it must be read and used in conjunction with such.

CODE	UNIT TITLE	Notional AQF Level	WEIGHTING POINTS	Prerequisites (for relevant prerequisite or co-requisite refer respective unit)	UTP98 UNIT CODE
UEPOPS422A	Schedule Generation	4	120	None	UTPNEG273A
UEPOPS423A	Plan a Scheduled Outage	4	120	None	UTPNEG274A
UEPOPS424A	Coordinate Local H.V. Networks	4	110	None	UTPNEG275A
UEPOPS425A	Produce Maintenance Plans For Generation Production Plant	4	130	None	UTPNEG219A
UEPOPS426A	Interpret and Analyse Multi-Operation Protection Devices	4	120	UEPOPS344A	NEW UNIT
UEPOPS427A	Interpret and Analyse Low Voltage Mechanical Protection Devices	4	120	None	NEW UNIT
UEPOPS428A	Develop H.V. Switching Programs	4	120	None	UTPNEG281A
UEPOPS429A	Coordinate and Direct Switching Program	4	110	None	UTPNEG284A
UEPOPS430A	Control Permit to Work Operations	4	130	None	NEW UNIT
UEPOPS431A	Collect and Analyse Hydrological and Meteorological Data	4	120	UEPOPS209A	NEW UNIT
UEPOPS432A	Start up a Heat Recovery Steam Generator Unit	4	130	UEPOPS333A	NEW UNIT
UEPOPS433A	Operate and Monitor a Heat Recovery Steam Generator Unit	4	120	UEPOPS33A	NEW UNIT
UEPOPS434A	Shutdown an Heat Recovery Steam Generator Unit	4	130	None	NEW UNIT
UEPOPS435A	Operate and Monitor Flue Gas Nox Mitigation System	4	110	None	NEW UNIT
UEPOPS436A	Operate and Monitor Dual Fuel Firing Plant	4	120	None	NEW UNIT
UEPOPS437A	Manage System Re-Start	4	110	None	NEW UNIT
UEPOPS438A	Co-Ordnate Electrical Energy Production	4	130	None	UTPNEG212A
UEPOPS439A	Plan and Organise Work	4	110	None	UTPNEG200A
UEPOPS440A	Coordinate Team Activities	4	110	None	UTPNEG202A
UEPOPS441A	Operate and Monitor System Equipment	4	110	None	UTPNEG267a
UEPOPS442A	Monitor and Coordinate the Operation of a Combined Cycle Gas Turbine Unit	4	110	NEPOPS314A	NEW UNIT

Schedule 5: Units UEPMNT401A – UEPMNT433A

The following Schedule forms an Integral Part of a relevant qualification structure; it must be read and used in conjunction with such.

CODE	UNIT TITLE	Notional AQF Level	WEIGHTING POINTS	Prerequisites (for relevant prerequisite or co-requisite refer respective unit)	UTP98 UNIT CODE
UEPMNT401A	Install and Maintain Complex Mechanical Seals	4	120	Trade Cert. needed	UTPNEG060A
UEPMNT402A	Conduct Complex Levelling and Alignment	4	120	Trade Cert. needed	UTPNEG061A
UEPMNT403A	Maintain Complex Mechanical Valves	4	120	UEPMNT303A	UTPNEG063A
UEPMNT404A	Maintain Complex Mechanical Pumps	4	120	UEPMNT304A	UTPNEG065A
UEPMNT405A	Maintain Fluid Power Systems	4	130	UEPMNT301A	UTPNEG068A
UEPMNT406A	Install and Maintain a Steam Turbine	4	130	UEPMNT402A	UTPNEG075A
UEPMNT407A	Install and Maintain a Gas Turbine	4	130	UEPMNT402A	NEW UNIT
UEPMNT408A	Install Hydro Turbines	4	130	Trade Cert. needed	NEW UNIT
UEPMNT409A	Conduct Welding Inspection/Supervision	4	130	Trade Cert. needed	UTPNEG089A
UEPMNT410A	Diagnose and Repair Faults in Electronic Equipment	4	120	Trade Cert. needed	UTPNEG123A
UEPMNT411A	Diagnose and Repair Faults in Complex Electrical Equipment	4	120	Trade Cert. needed	UTPNEG124A
UEPMNT412A	Modify Complex Electrical Equipment	4	120	Trade Cert. needed	UTPNEG127A
UEPMNT413A	Modify Electronic Electrical Equipment	4	120	Trade Cert. needed	UTPNEG128A
UEPMNT414A	Test and Commission Complex Electrical Equipment	4	120	Trade Cert. needed	UTPNEG130A
UEPMNT415A	Diagnose and Repair Faults in Complex Refrigeration/Air Conditioning and Systems	4	120	Trade Cert. needed	UTPNEG135A
UEPMNT416A	Overhaul Electrical Generators	4	130	UEPMNT351A	NEW UNIT
UEPMNT417A	Inspect Electrical Generators and Diagnose Faults	4	120	Trade Cert. needed	NEW UNIT
UEPMNT418A	Perform Mechanical and Fabrication Drafting	4	120	Trade Cert. needed	UTPNEG145A
UEPMNT419A	Perform Civil Drafting	4	120	Trade Cert. needed	UTPNEG146A
UEPMNT420A	Perform Electrical/Electronic Drafting	4	120	Trade Cert. needed	UTPNEG147A
UEPMNT421A	Conduct Technical Inspection of Process Plant and Equipment	4	120	Trade Cert. needed	UTPNEG232A

Schedule 5: Units UEPMNT401A – UEPMNT433A (cont)

The following Schedule forms an Integral Part of a relevant qualification structure; it must be read and used in conjunction with such.

CODE	UNIT TITLE	Notional AQF Level	WEIGHTING POINTS	Prerequisites (for relevant prerequisite or co-requisite refer respective unit)	UTP98 UNIT CODE
UEPMNT422A	Conduct Performance Testing on Process Plant and Equipment	4	120	Trade Cert. needed	UTPNEG233A
UEPMNT423A	Conduct/Implement Condition Monitoring	4	120	Trade Cert. needed	UTPNEG234A
UEPMNT424A	Monitor Efficiency of Thermal Steam Cycle Power Plant	4	110	Trade Cert. needed	UTPNEG235A
UEPMNT425A	Maintain Complex Instrumentation Equipment	4	120	Trade Cert. needed	UTPNEG247A
UEPMNT426A	Maintain Electronic Instrumentation Equipment	4	120	Trade Cert. needed	UTPNEG248A
UEPMNT427A	Diagnose and Repair Faults in Complex Instrumentation Equipment	4	120	Trade Cert. needed	UTPNEG250A
UEPMNT428A	Modify Complex Instrumentation Equipment	4	120	Trade Cert. needed	UTPNEG253A
UEPMNT429A	Modify Electronic Instrumentation Equipment	4	120	Trade Cert. needed	UTPNEG254A
UEPMNT430A	Test and Commission Complex Instrumentation Equipment	4	120	Trade Cert. needed	UTPNEG256A
UEPMNT431A	Test and Commission Electronic Instrumentation Equipment	4	120	Trade Cert. needed	UTPNEG257A
UEPMNT432A	Write Programs for Control Systems	4	120	Trade Cert. needed	UTPNEG260A
UEPMNT433A	Conduct Routine Generation Electrical Maintenance	4	120	Trade Cert. needed	UTPNEG137A

Schedule 6: Units UEPOPS501 – UEPOPS515

The following Schedule forms an Integral Part of a relevant qualification structure; it must be read and used in conjunction with such.

CODE	UNIT TITLE	Notional AQF Level	WEIGHTING POINTS	Prerequisites (for relevant prerequisite or co-requisite refer respective unit)	UTP98 UNIT CODE
UEPOPS501A	Manage Occupational Health and Safety Policy and Procedures	5	160	UEPOPS401A	UTPNEG003A
UEPOPS502A	Manage Permit to Work System	5	160	UEPOPS403A	NEW UNIT
UEPOPS503A	Manage First Response Team Operations	5	160	UEPOPS404A	NEW UNIT
UEPOPS504A	Develop Implement and Monitor Environmental Management Systems	5	160	None	UTPNEG009A
UEPOPS505A	Produce Maintenance Strategies For Generation Production Plant	5	150	UEPOPS425A	UTPNEG218A
UEPOPS506A	Establish and Implement Operational Strategies for Power Production	5	150	None	UTPNEG220A
UEPOPS507A	Conduct Project Management	5	150	None	UTPNEG223A
UEPOPS508A	Manage Commissioning/Decommissioning	5	150	None	UTPNEG224A
UEPOPS509A	Manage Quality Control Procedures	5	150	None	UTPNEG225A
UEPOPS510A	Monitor Power Generation Plant Reliability	5	140	None	UTPNEG236A
UEPOPS511A	Tune Process Plant and Equipment	5	150	None	UTPNEG237A
UEPOPS512A	Manage the Network/System	5	160	UEPOPS420A	UTPNEG271A
UEPOPS513A	Manage Operational Crisis to Maintain/Restore Power System Integrity	5	140	None	UTPNEG279A
UEPOPS514A	Control Hydro Generation/Pumping	5	140	None	UTPNEG280A
UEPOPS515A	Coordinate Power Generation	5	150	None	UTPNEG285A

Schedule 7: Units UEPMNT501 – UEPMNT504

The following Schedule forms an Integral Part of a relevant qualification structure; it must be read and used in conjunction with such.

CODE	UNIT TITLE	Notional AQF Level	WEIGHTING POINTS	Prerequisites (for relevant prerequisite or co-requisite refer respective unit)	UTP98 UNIT CODE
UEPMNT501A	Diagnose and Repair Faults in Electrical and Electronic Systems	5	160	Trade Cert. needed	UTPNEG125A
UEPMNT502A	Test and Commission Electronic Electrical Systems	5	160	Trade Cert. needed	UTPNEG132A
UEPMNT503A	Diagnose and Repair Faults in Instrumentation Systems	5	160	Trade Cert. needed	UTPNEG251A
UEPMNT504A	Test and Commission Instrumentation Systems	5	160	Trade Cert. needed	UTPNEG258A

Schedule 8: Imported Competency Standard Units from other Training Packages

The following Schedule forms an integral part of a relevant qualification structure, it must be read and used in conjunction with such. The following Imported Competency Standard Units form part of this Schedule.

Users are advised that imported units are listed by notional AQF level and can be used as electives in qualifications from this package at the same AQF level or lower.⁶

Users wishing to import units will need to contact the respective original Training Package developer or the NTIS to obtain copies of the most recent version of the competency standard unit to determine their relevance and, utilise them, where appropriate in accordance with the requirements of this Training Package.

Users intending to import units of competence from other Training Packages must have them approved and valued in accordance with the requirements of this Training Package, by the National Generation Training Group in order for them to contribute to an ESI qualification.

⁶ The list of imported units is also included in Volume 1 Table 3 – Index of Competency Standard Units and Scopes/Descriptors and again in Volume 2 Schedule 8 – Imported Units from other Training Packages.

SOURCE TRAINING PACKAGE	UNIT CODE	UNIT TITLE	AQF	WGHT' POINTS
BSB01 Business Services	BSBADM304A	Design and develop text documents	3	80
	BSBADM305A	Create and Use Data Bases	3	80
	BSBCMN108A	Develop Keyboard Skills	2	30
	BSBCMN203A	Communicate in the Workplace	2	30
	BSBCMN209A	Provide information to clients	2	30
	BSBCMN213A	Produce Simple Word Processed Documents	2	30
	BSBCMN302A	Organise personal work priorities and development	3	80
	BSBCMN310A	Deliver and Monitor a Service to Customers	3	80
	BSBCMN311A	Maintain Workplace Safety	3	80
	BSBCMN312A	Support Innovation and Change	3	80
BSB Frontline Management (BSB01)	BSBFLM302A	Support leadership in the workplace	3	80
	BSBFLM303B	Contribute to effective workplace relationships	3	80
	BSBFLM304A	Participate in work teams	3	80
	BSBFLM305B	Support operational plan	3	80
	BSBFLM306B	Provide workplace information and resourcing plans	3	80
	BSBFLM309B	Support continuous improvement systems and processes	3	80
	BSBFLM311B	Support a workplace learning environment	3	80
BSB Frontline Management (BSB01)	BSBCMN402A	Develop Work Priorities	4	110
	BSBFLM402A	Show leadership in the workplace	4	110
	BSBFLM403B	Implement effective workplace relationships	4	110
	BSBFLM404A	Lead work teams	4	110
	BSBFLM405B	Implement operational plans	4	110
	BSBFLM406B	Implement workplace information system	4	110
	BSBFLM409A	Implement continuous improvement	4	110
	BSBCMN404A	Develop teams and individuals	4	110
	BSBCMN410A	Coordinate implementation of customer service strategies	4	110
	BSBCMN411A	Monitor a Safe Workplace	4	110
	BSBCMN412A	Promote Innovation and Change	4	110
BSB Frontline Management (BSB01)	BSBFLM501B	Manage personal work priorities and professional development	5	140
	BSBFLM502A	Provide leadership in the workplace	5	140
	BSBFLM503B	Manage effective workplace relationships	5	140
	BSBFLM504A	Facilitate work teams	5	140
	BSBFLM505B	Manage operational plan	5	140

SOURCE TRAINING PACKAGE	UNIT CODE	UNIT TITLE	AQF	WGHT' POINTS
	BSBFLM506B	Manage workplace information systems	5	140
	BSBFLM507B	Manage quality customer service	5	140
	BSBFLM509B	Facilitate continuous improvement	5	140
	BSBFLM510B	Facilitate and capitalise on change and innovation	5	140
	BSBFLM511B	Develop a workplace learning environment	5	140
	BSBFLM512A	Ensure team effectiveness	5	140
	BSBMGT505A	Ensure a Safe Workplace	5	140